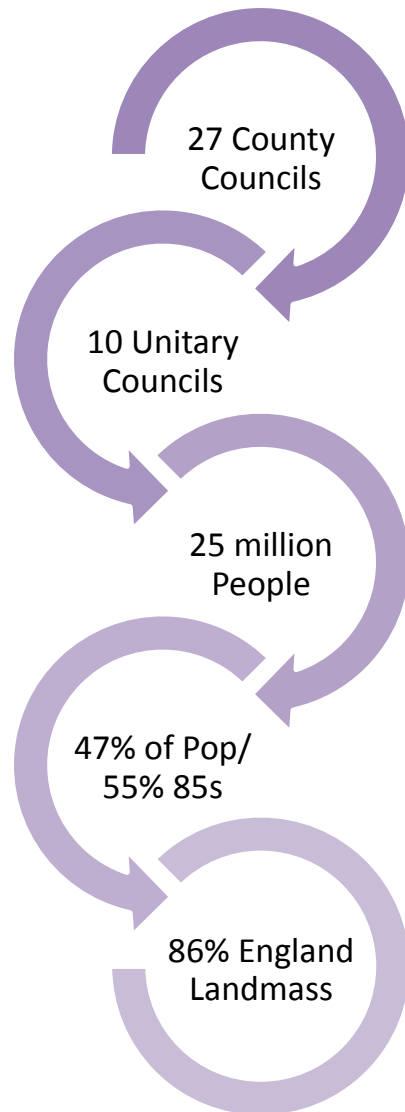


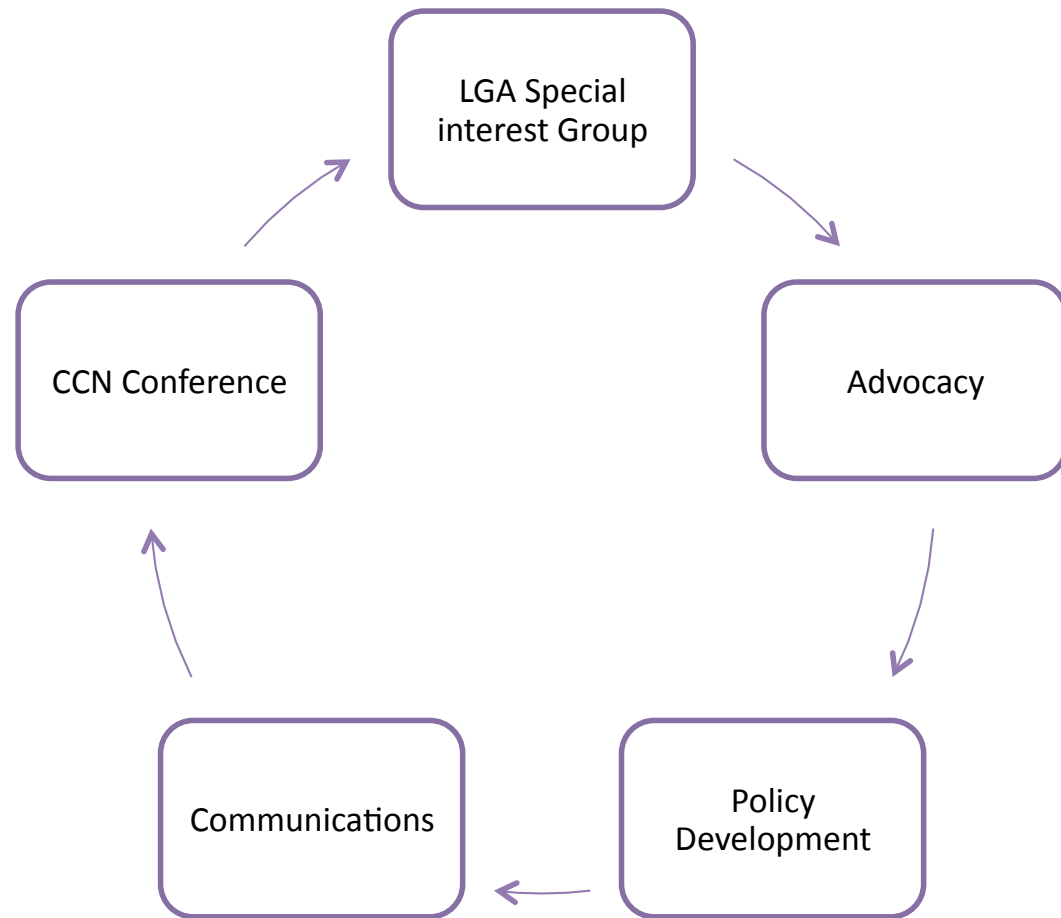
Social Care & The Care Act

James Maker
Policy Manager

What we represent.....

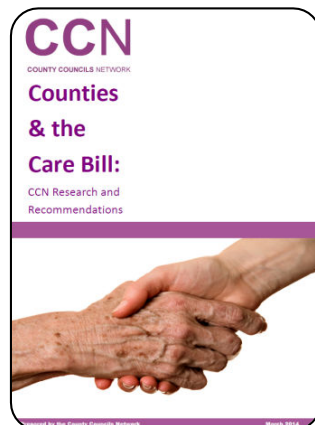


What we do...

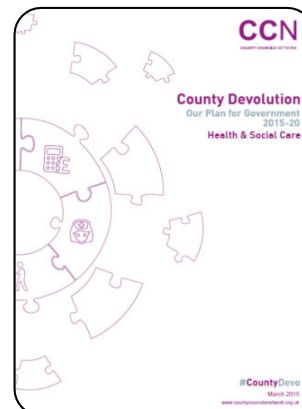


CCN Activity on ASC - What have we done up to now?

2014



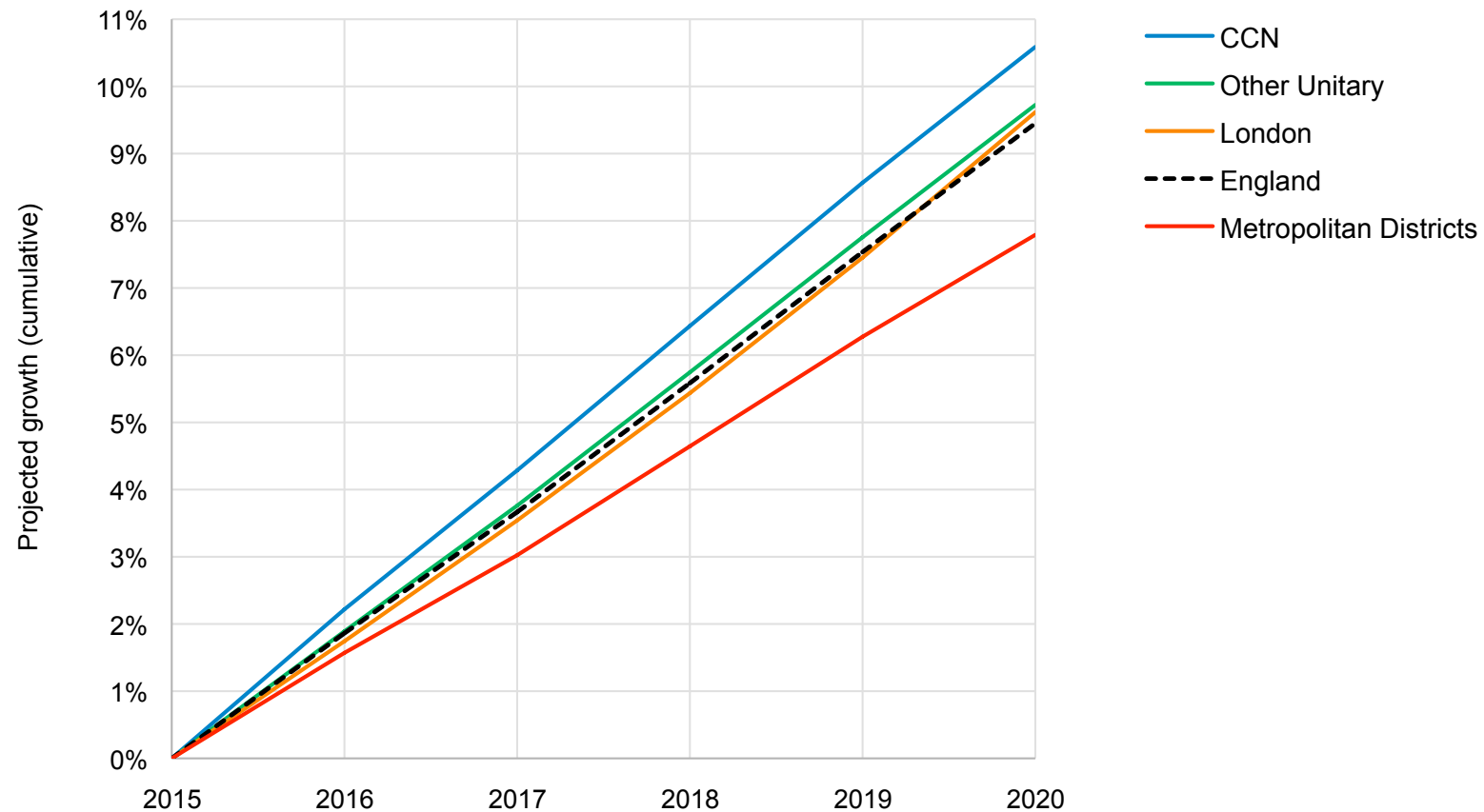
2015



The State of Care in Counties

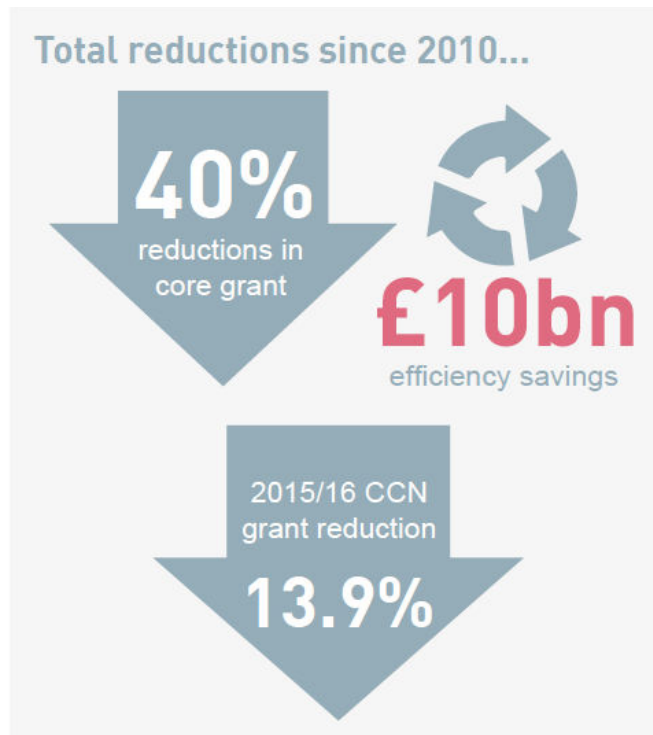
Ageing Population

By 2020, the average CCN authority is projected to see a 10.6% increase in its older adult population.



The State of Care in Counties

Funding Reductions



Spending Review 2015

- Counties receive 4 times less RNF compared to inner London.
- 2015/16 £959m funding gap for county social care departments
- By 2020 another £4.1bn grant reductions – expected to be 24% but true figure for counties unknown.
- New ‘social care’ council tax precept – raises estimated £193m 2016/17 for counties: but no guarantee this will be taken up by councils.
- Expanded Better Care Fund by £1.5bn 2019/20 – but is this new money and when?
- Commitment to ‘rebalance’ funding to support those authorities with social care responsibilities.
- Big changes on the way – including business rates retention.

The State of Care in Counties

Care Market Crisis



County Care Markets

- Faced with funding reductions, councils have reduced fees to residential and nursing care homes.
- Council fees on average 40% lower than 'self-funder' fees.
- Fee gap of £630m in county areas.
- Fee levels now 'unsustainable' with providers leaving the market.
- Unfunded, the living wage will worsen sustainability.

The State of Care in Counties

Rurality and Geography

- Population sparsity leads to higher delivery costs and makes it more difficult for commercial providers to keep their staff. Rurality also leads to complex care markets.

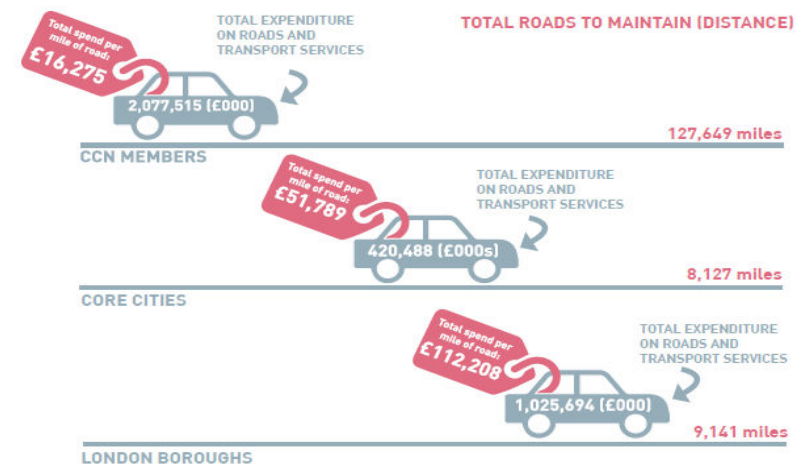
LG Futures.....specific cost drivers associated with rural service delivery led to 'a substantial cost penalty' for predominately rural areas. They argued that 'the provision for sparsity within the formulae is very small compared to the size of the actual cost penalty'.

Nottinghamshire*'the challenges are compounded by the disparity in pay and Terms and Conditions of employment with health care staff generally having better T&C and pay'.*

Lancashire

'We have a very large and fragmented care provider market, with almost four hundred care homes for older people and almost two hundred home care providers. Relating to so many providers is challenging, as is shaping and influencing such a market. Providing domiciliary services in rural areas, where fewer providers operate, travel time is much greater and staff more difficult to recruit.'

Total Expenditure on Roads and Spend Per Mile¹¹



The State of Care in Counties

Health Economies

- Wide geographical areas also create organisational challenges for the large and complex health economies in rural county areas.

North Yorkshire

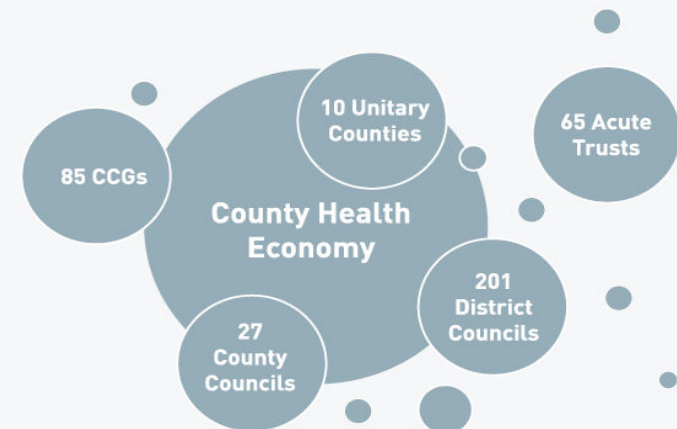
.....1 County and 7 Borough and District Councils, 5 Clinical Commissioning Groups, 4 main Acute NHS Trusts and 3 Mental Health Trusts, over 4000 voluntary sector organisations and multiple independent sector providers, as well as a high proportion of people who fund their own care, there is significant complexity in the commissioning and delivery of health and social care services”

Lincolnshire County Council

“Working in a two tier area presents additional complexity and resources to manage it. Lincolnshire has four CCGs and 7 district/city councils. The challenge of obtaining consensus is therefore self-evident and is further complicated with a mixed political make up within the local Government system.”

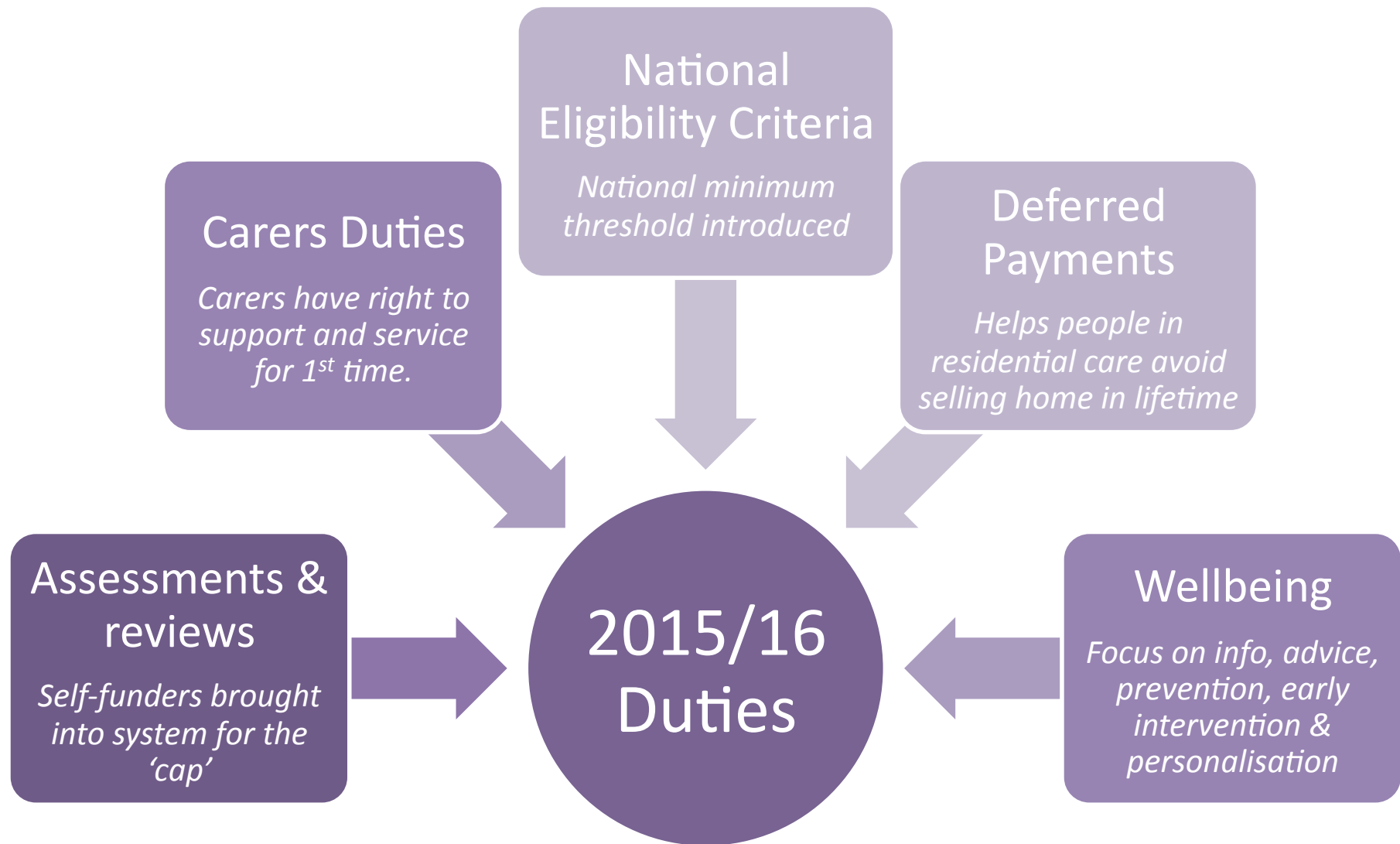
Complex Health Economies

In CCN member councils there are:



In London there are 32 CCGs and 14 Acute Trusts.

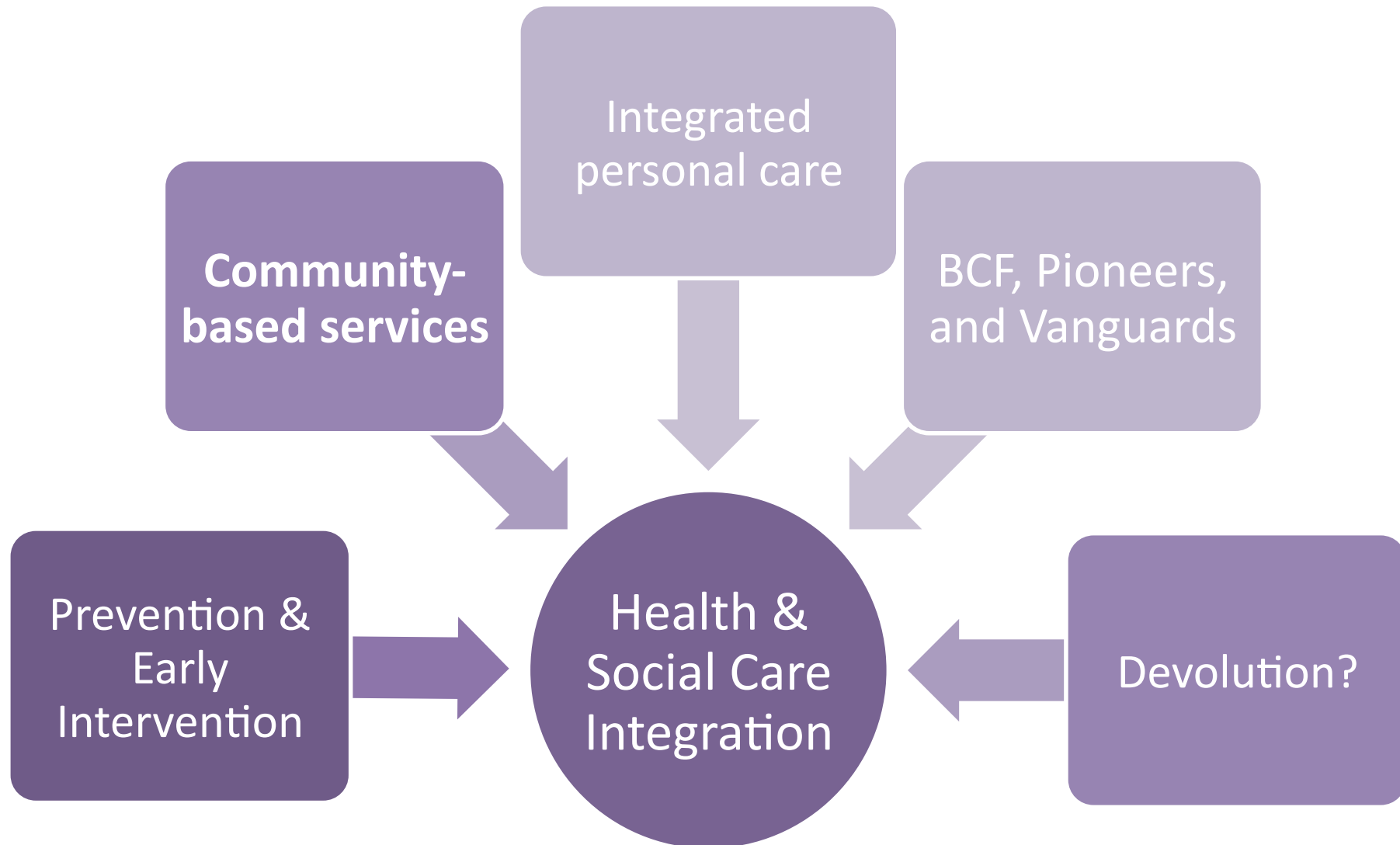
The Care Act



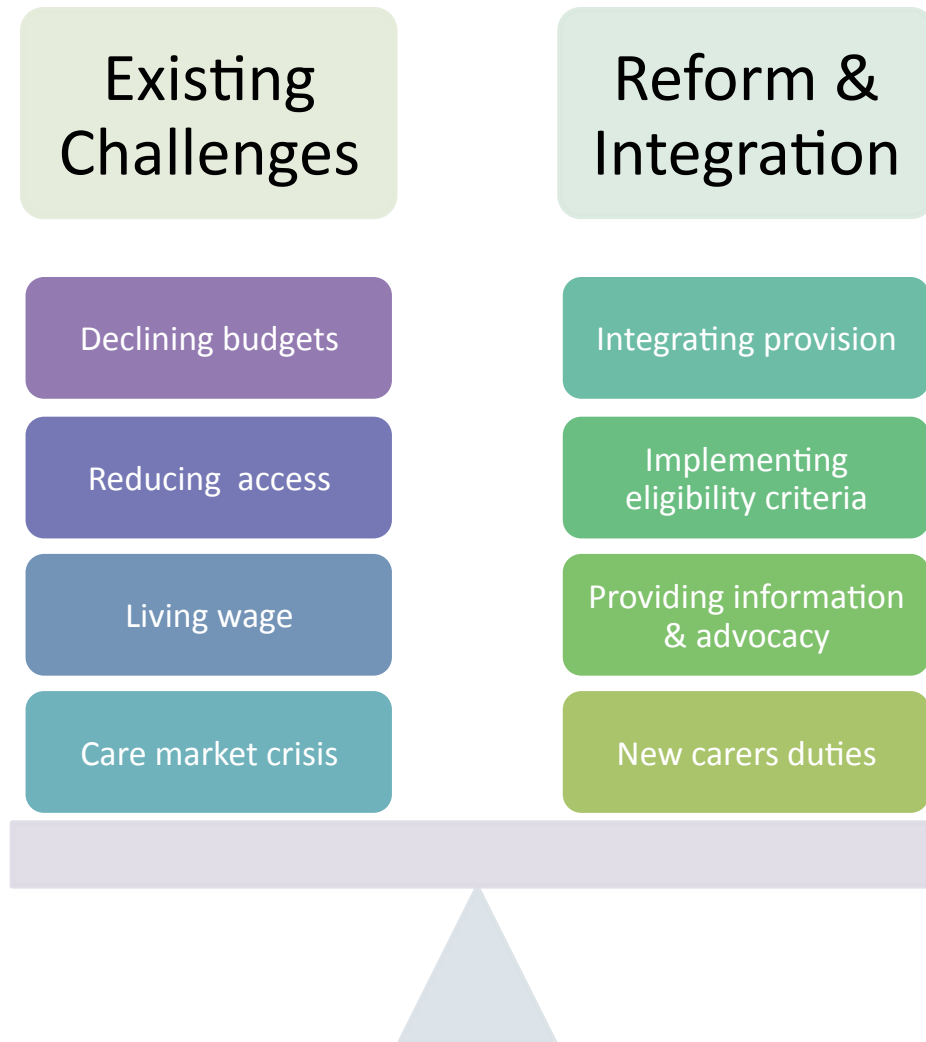
The Care Act – Part 2 ‘Dilnot’ Reforms

DELAYED

Better Care Fund & Integration



Care Act – Challenges & Opportunities



Care Act & Social Care – What can Parish & Town Councils do to help?

Three Examples

Care Act & Social Care – What can Parish & Town Councils do to help? Buckinghamshire – Information and Support

- Local Area Forums key route for disseminating information:
- Carers advice service
- Guidance on maintaining independence
- Information on social care services and steps to get support
- Information on the Care Act

ADULT SOCIAL CARE IN BUCKS

The Care Act, which came into effect on 1st April 2015, has introduced the most significant reform of adult social care in over 60 years. These changes include:

- A new national eligibility threshold which means that, no matter where you live in the country, if your needs meet the threshold then you will be eligible for support
- The right for a carer to have an assessment, even if the person for whom you care is not receiving support from the Council
- New funding arrangements, which mean you should not have to sell your home during your lifetime to pay for your care


For much more information about the changes to care and support in Buckinghamshire, and for details of how you might benefit, please visit our new website:

www.careadvicebucks.org

(or you can call us on 01296 383204)

Care Advice Buckinghamshire

This year we have introduced a new website Care Advice Buckinghamshire (www.careadvicebucks.org) as the online source for information and guidance on everything to do with maintaining the best quality of life if your circumstances mean it's more difficult for you to live well independently.



The website is easy to use and provides all you need to know about adult social care services in Buckinghamshire, and far more besides, with an e-marketplace for care products and services. From October 2015 you can also complete and submit an assessment of your care needs.

Information and guidance

Care Advice Buckinghamshire lets you find out about many of the aspects of maintaining a good quality of life when you have particular needs because of your personal circumstances.

There's information about what adult social care involves, and the steps to take if you need support, including the financial assessment if you need help to pay for your care.

If you are a carer, you can find out what support is available to you and about getting a carer's assessment.

You will find information about health, financial matters and a wide range of social and leisure activities to keep you involved in your community.



And if you're not on the internet

We are acutely aware that not everyone has access to the internet, or even uses a computer, and so we are building a support network to mirror all that's available online.

Our staff will help you find the information you need then print the relevant pages from the website and post them to you.

The library service can help you get online using the library computers. Don't worry if you have never used a computer because they run free Learn My Way courses which are one-to-one volunteer led sessions enabling you to get online and learn the basics...

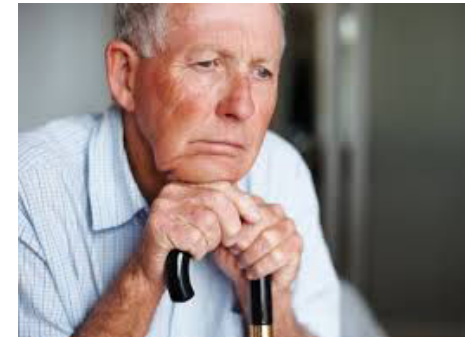
- How to use a keyboard and mouse
- How to search and explore the internet
- How to keep in touch with email
- How to stay safe online

Care Act & Social Care – What can Parish & Town Councils do to help?

Wiltshire – Local Intelligence and Commissioning Support

- Area Boards at community area levels, 18 across Wiltshire
- Primarily elected members with Town and Parish Councils attending, but not as voting members
- Communities are given a greater voice in influencing commissioning arrangements for health and social care
- Raising the profile of older people and carers within these boards
- Series of workshops to look at loneliness and social isolation
- An older person and a carer champion
- Commission support at a community level



Care Act & Social Care – What can Parish & Town Councils do to help?

Warwickshire County Council - Community Capacity

- Partners recognise the increasing financial pressures and the challenges which these pressures bring, but are united in seeking to maximise the role and function of statutory and voluntary organisations locally, with the objective of 'making a difference' for residents
- WCC currently working with a number of Local Councils to promote Community Capacity and support the range of services which Local Councils are able to offer residents
- Initiative seeks to build upon the Town Councils role as a community leader
- Implement a range of projects that develop community resilience and improve health and social care outcomes for an increasingly elderly population



Questions?

James Maker

CCN Policy Manager

James.maker2@local.gov.uk

0207 6643009

Michael Chard

Senior Policy Officer

Michael.Chard@local.gov.uk

0207 6643009