

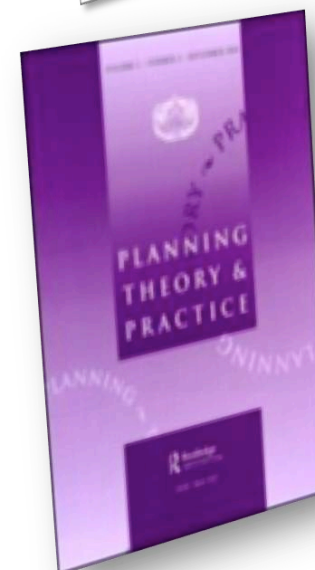
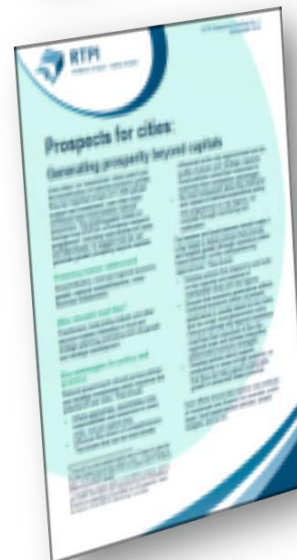
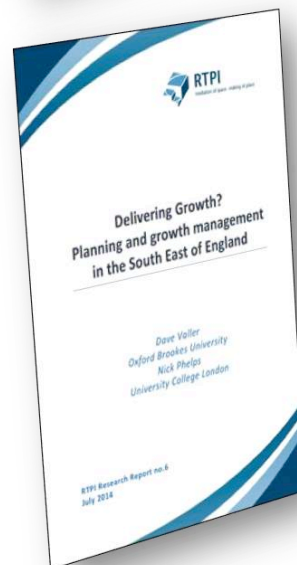
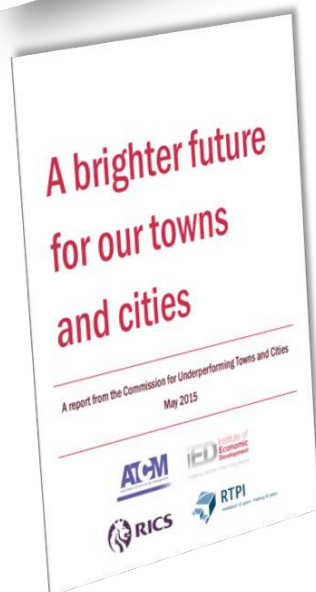
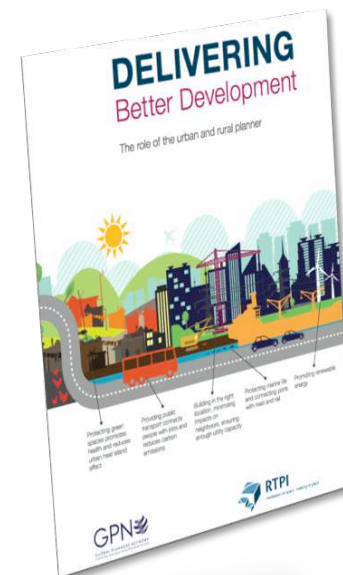
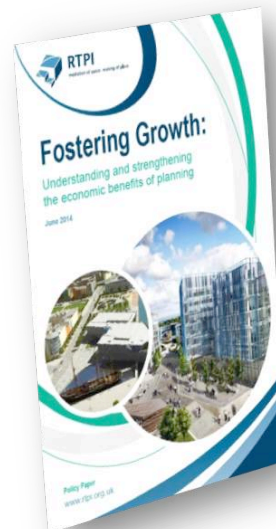
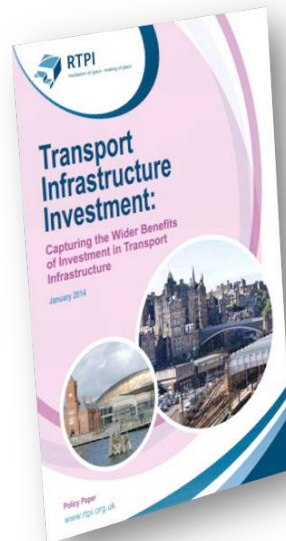
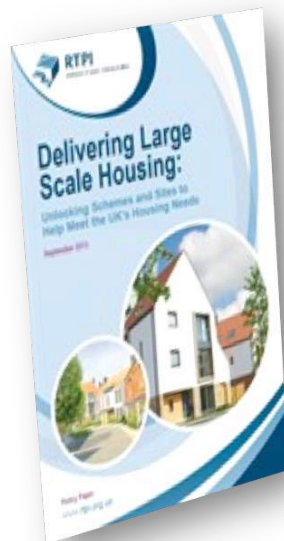
PLANNING THE LOCAL



Janet Askew
RTPI President 2015
Janet.askew@rtpi.org.uk



Centenary Horizons
Papers: principles
for good planning in
the future



RTPI survey 2014 (commissioned)



of people think their community
needs a stronger voice in planning
rather than planning decisions being left more to developers

See Creating Economically Successful Places, www.rtpi.org.uk/planninghorizons

Results based on a nationally-representative survey of 2,083 UK adults conducted on behalf of the RTPI by Populus, 22nd-23rd October 2014.



of people feel they don't have enough
say in how their local area develops
on issues such as housing, transport, shops and amenities

See Creating Economically Successful Places, www.rtpi.org.uk/planninghorizons

Results based on a nationally-representative survey of 2,083 UK adults conducted on behalf of the RTPI by Populus, 22nd-23rd October 2014.



More
than



60% of people believe
investing in local services
and amenities is a better
way to grow the economy
than recruiting companies

See Creating Economically Successful Places, www.rtpi.org.uk/planninghorizons

Results based on a nationally-representative survey of 2,083 UK adults conducted on behalf of the RTPI by Populus, 22nd-23rd October 2014.



More
than **4 in
10**



people think that
national and local
politicians are
unprepared for
future economic
challenges

See Creating Economically Successful Places, www.rtpi.org.uk/planninghorizons

Results based on a nationally-representative survey of 2,083 UK adults conducted on behalf of the RTPI by Populus, 22nd-23rd October 2014.



Most important factors for people when choosing where to live



See Creating Economically Successful Places, www.rtpi.org.uk/planninghorizons

Results based on a nationally-representative survey of 2,083 UK adults conducted on behalf of the RTPI by Populus, 22nd-23rd October 2014.



RTPI 2014

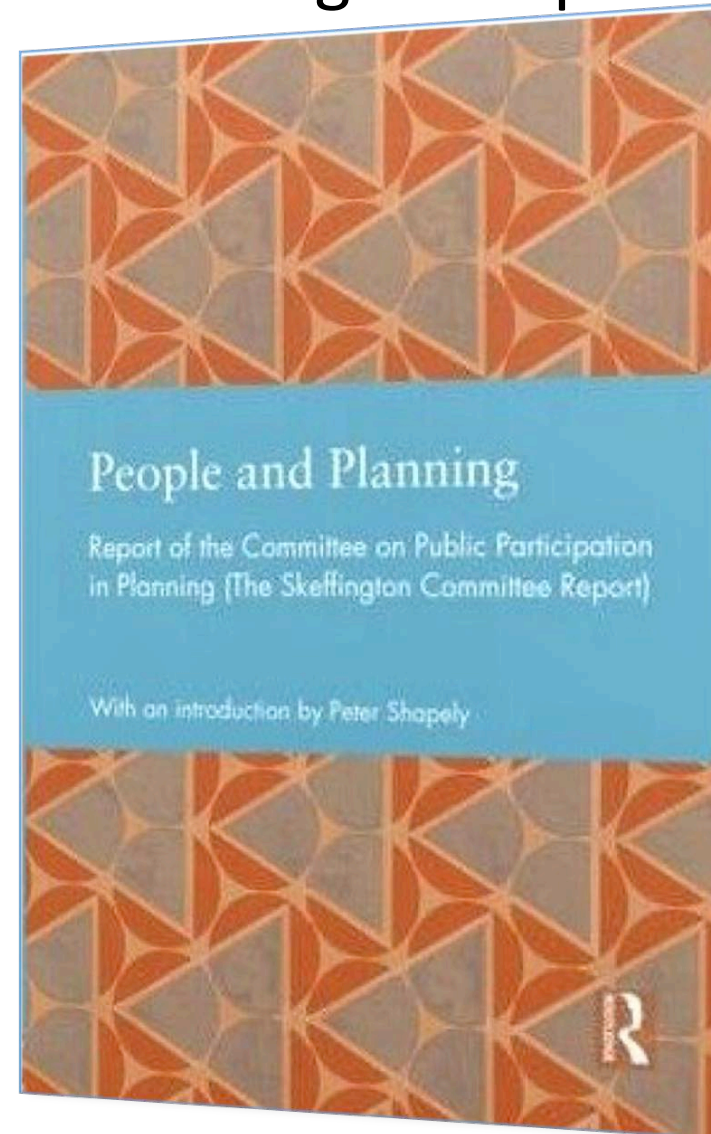
100 years of professional planning

Neighbourhood planning

High streets and the role of retail in a small town

What can you do to promote encourage and promote good planning?

The Skeffington Report 1968

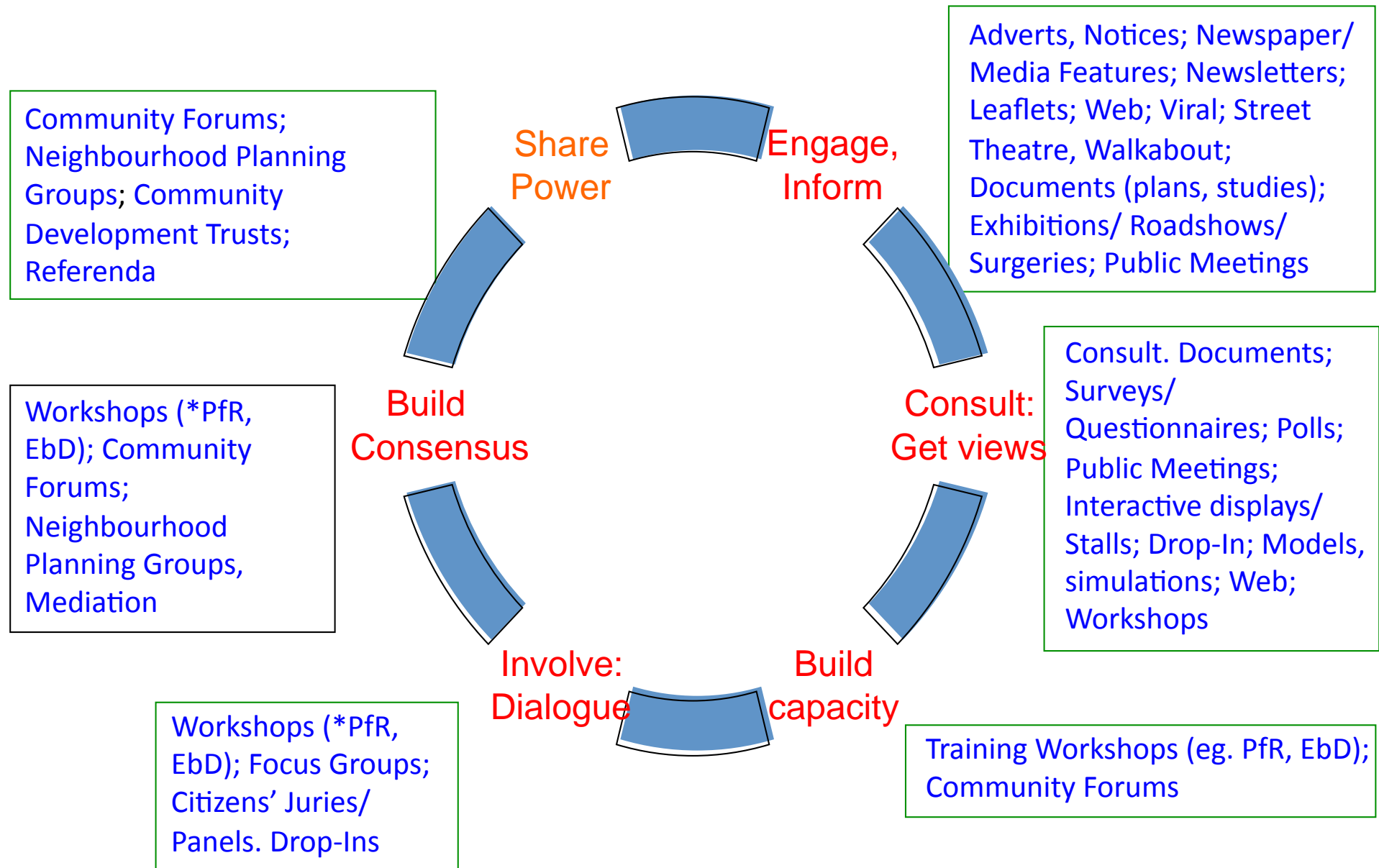


BIG SOCIETY NOT BIG GOVERNMENT

‘rebalancing of power away from the centre & back in the hands of local people’

Empowerment & incentivisation not direction

Shifting power to the community



Regions in England

- Nine regions incl. London

Regional Spatial Strategies

- Set housing targets
- Larger scale housing areas
- Top down....
- Disliked by local people



Local development framework (simplified)

Regional spatial strategy and sub-regional strategies

Local development framework (LDF)

Development plan: statutory content

Core strategy

Site specific allocations

Proposals map

Action
plans

Supplementary documents

Village plans

Action
plans

County minerals and
waste development
frameworks

Community strategy

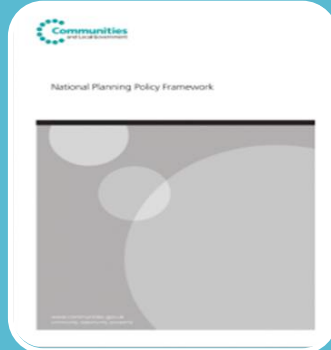
Local transport plan

Local environment action
plans

Waste management plans

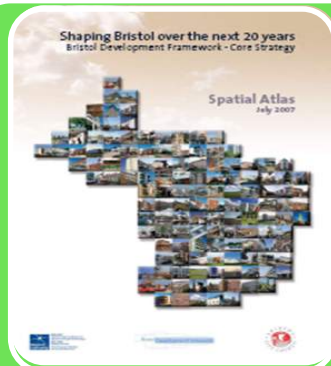
Others

Decision making: statutory plans and the hierarchy



National Planning Policy Framework

- Policies laid down by Central Government: very broad
- Also the statutes of what is permitted



Local Plans

- Policies made by Local Government
- City council or rural council
- Mainly policy, some designation of land



Neighbourhood Plans

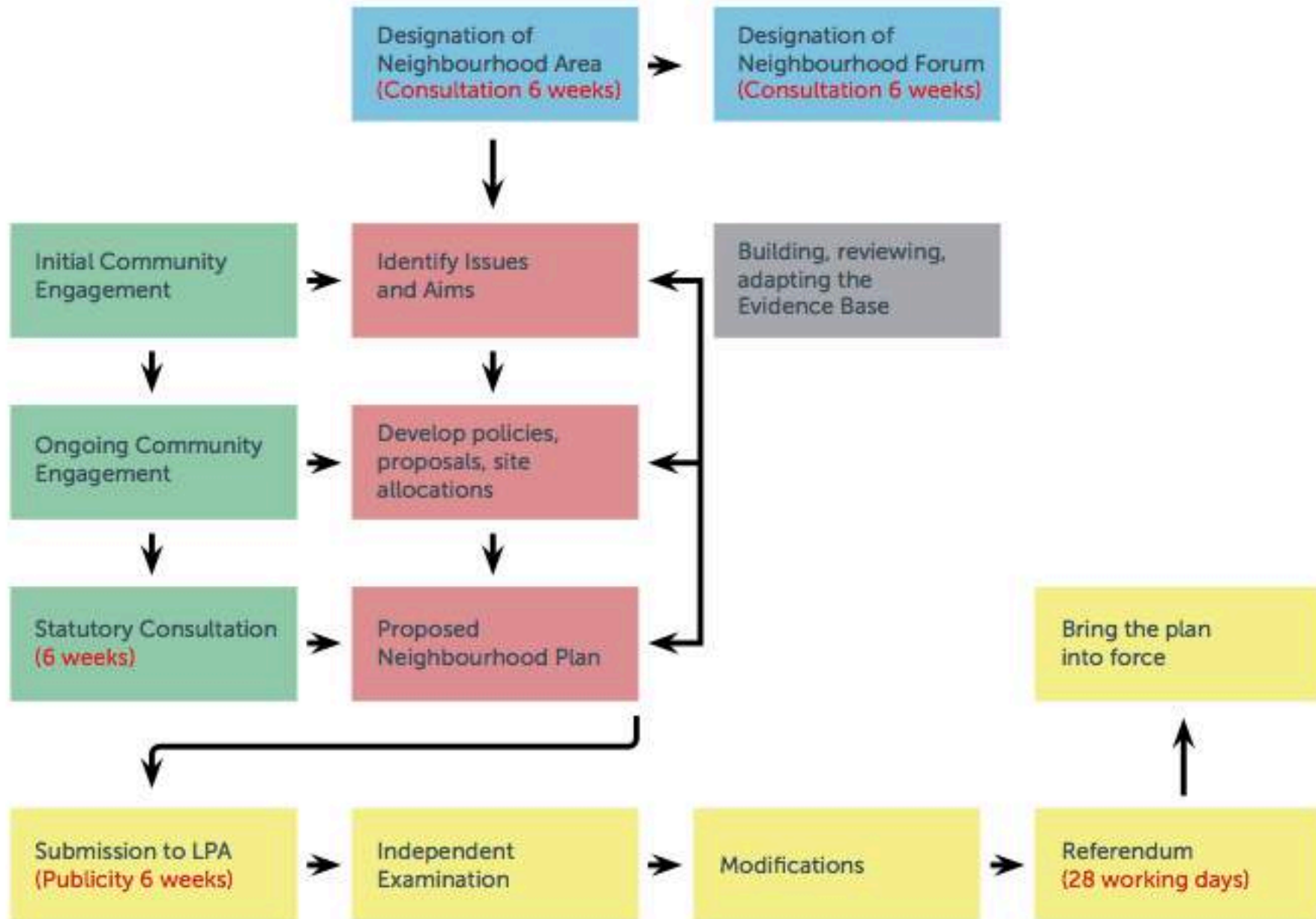
- Plans made for neighbourhoods by a community
- Small areas and in detail

PLANS
MUST
CONFORM

Neighbourhood Plan Process



Process Diagram

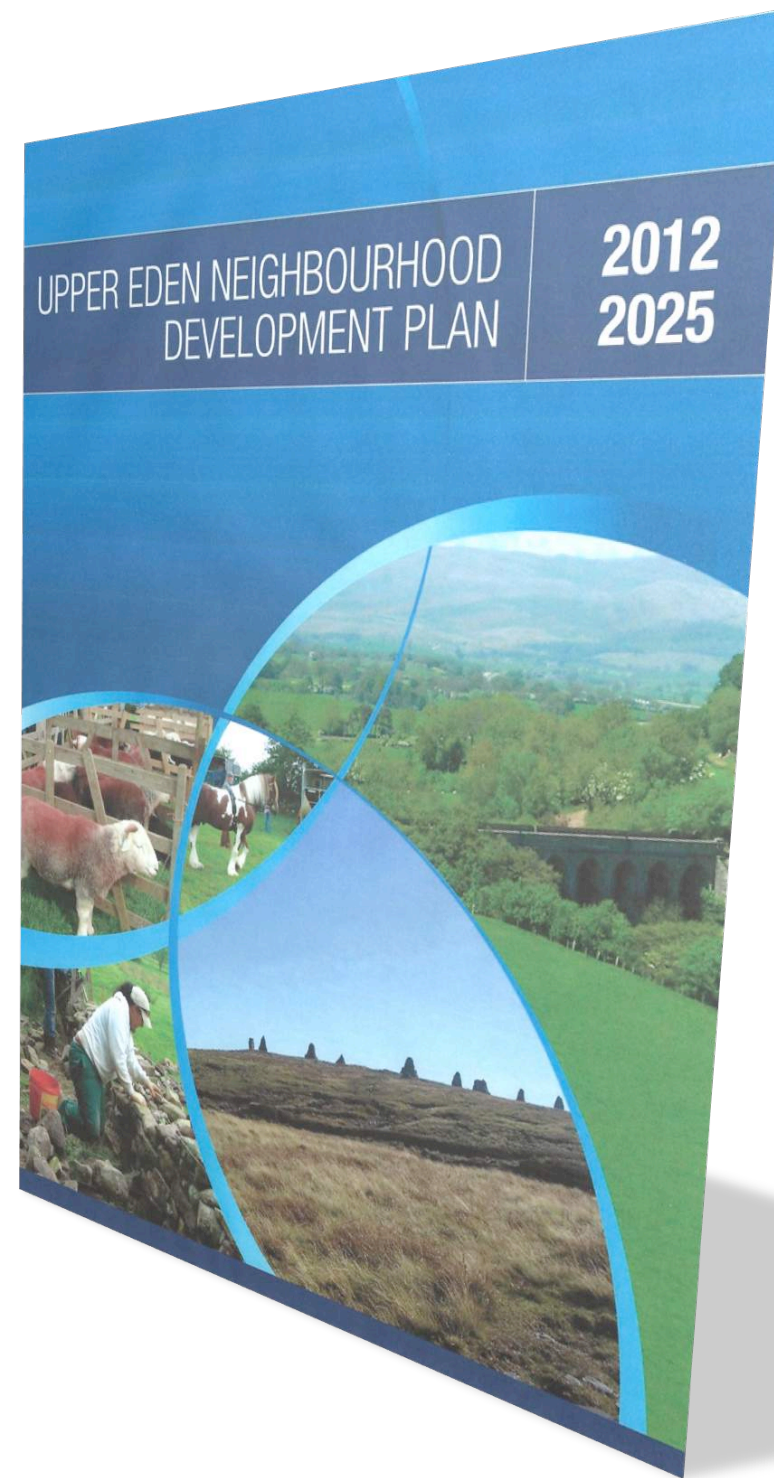


1400 embarked on a
neighbourhood plan

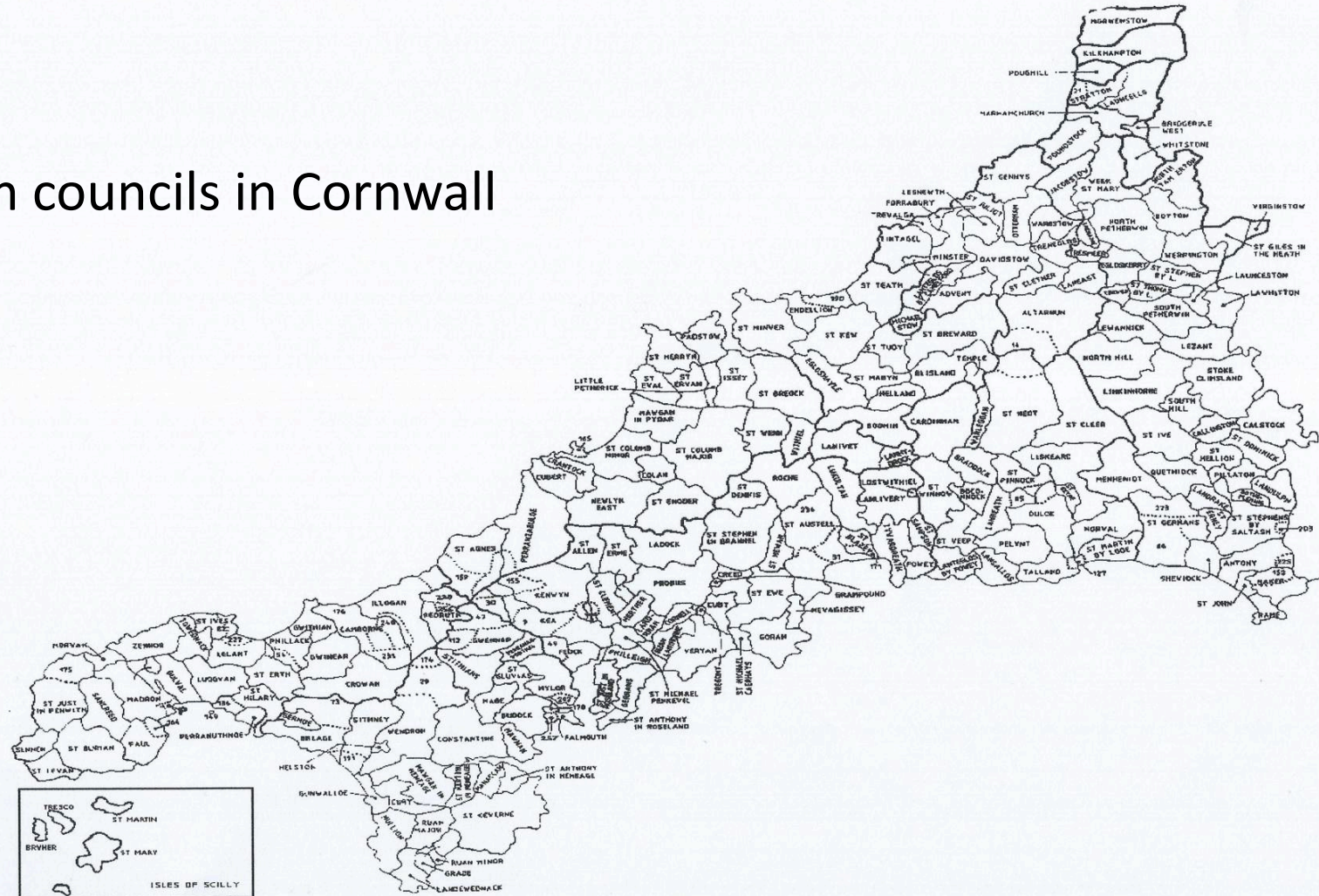
38 adopted as plans

52 approved by
referendum

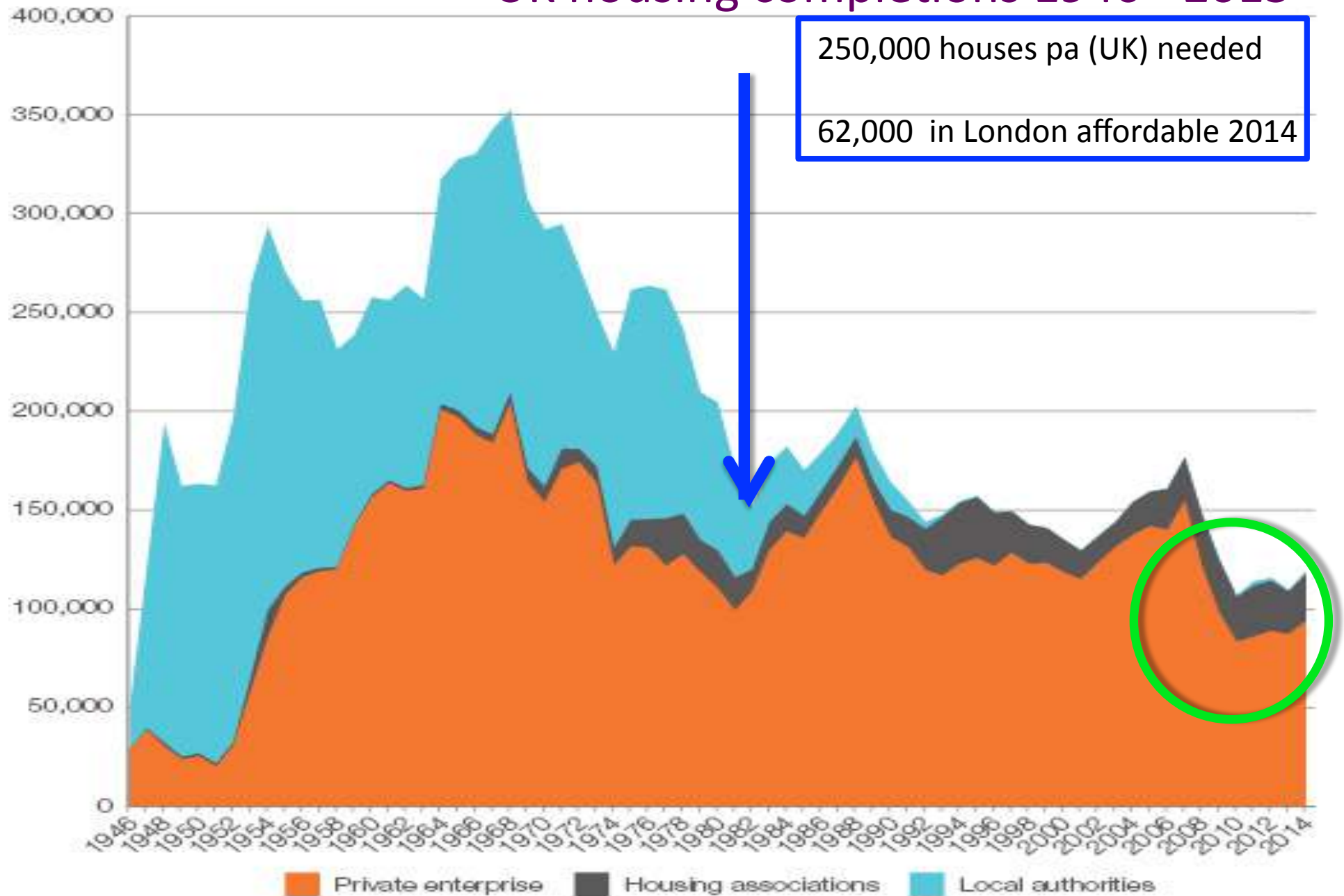
12,000+ potential



213 parish councils in Cornwall



UK housing completions 1946 - 2015

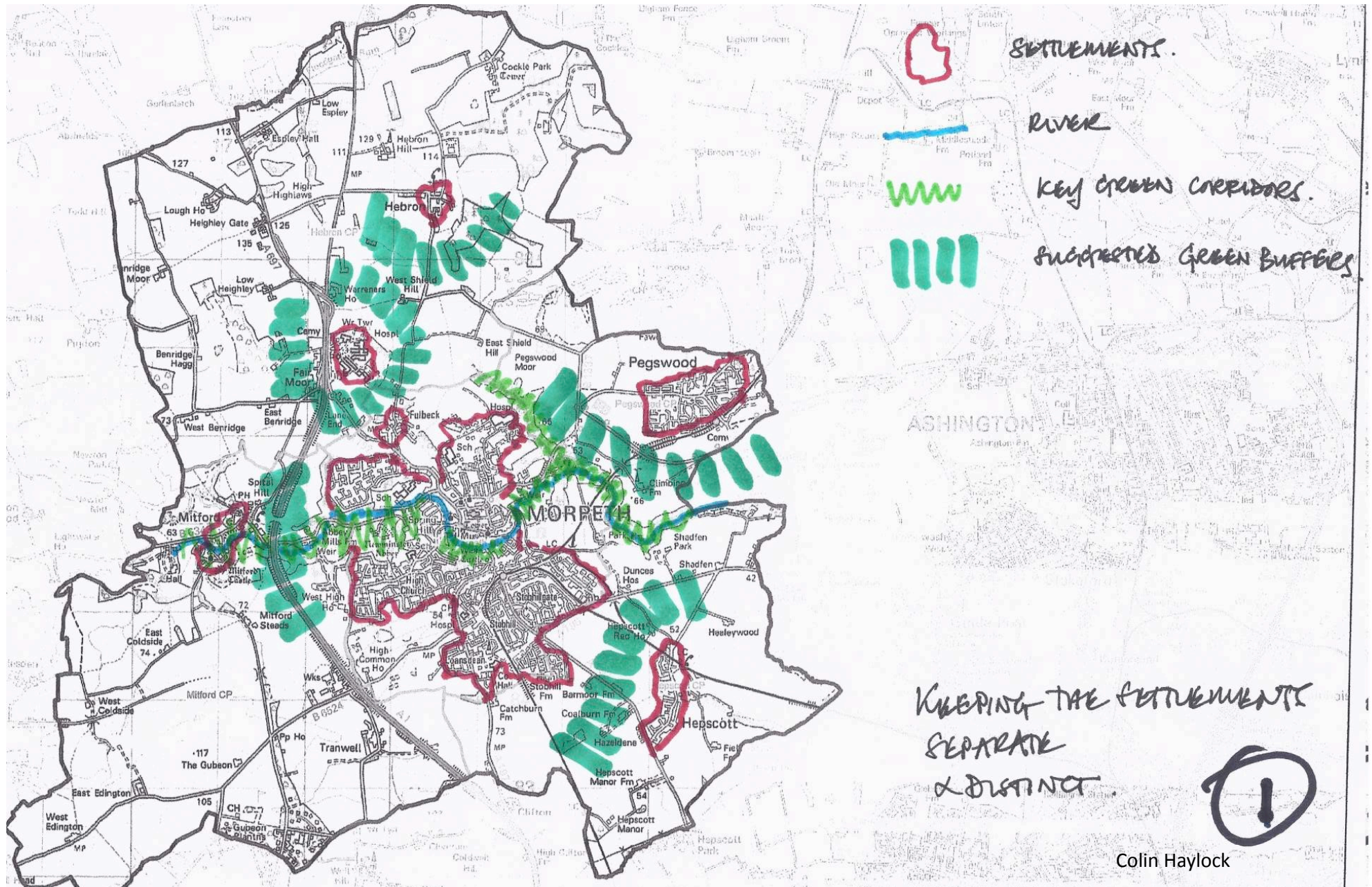




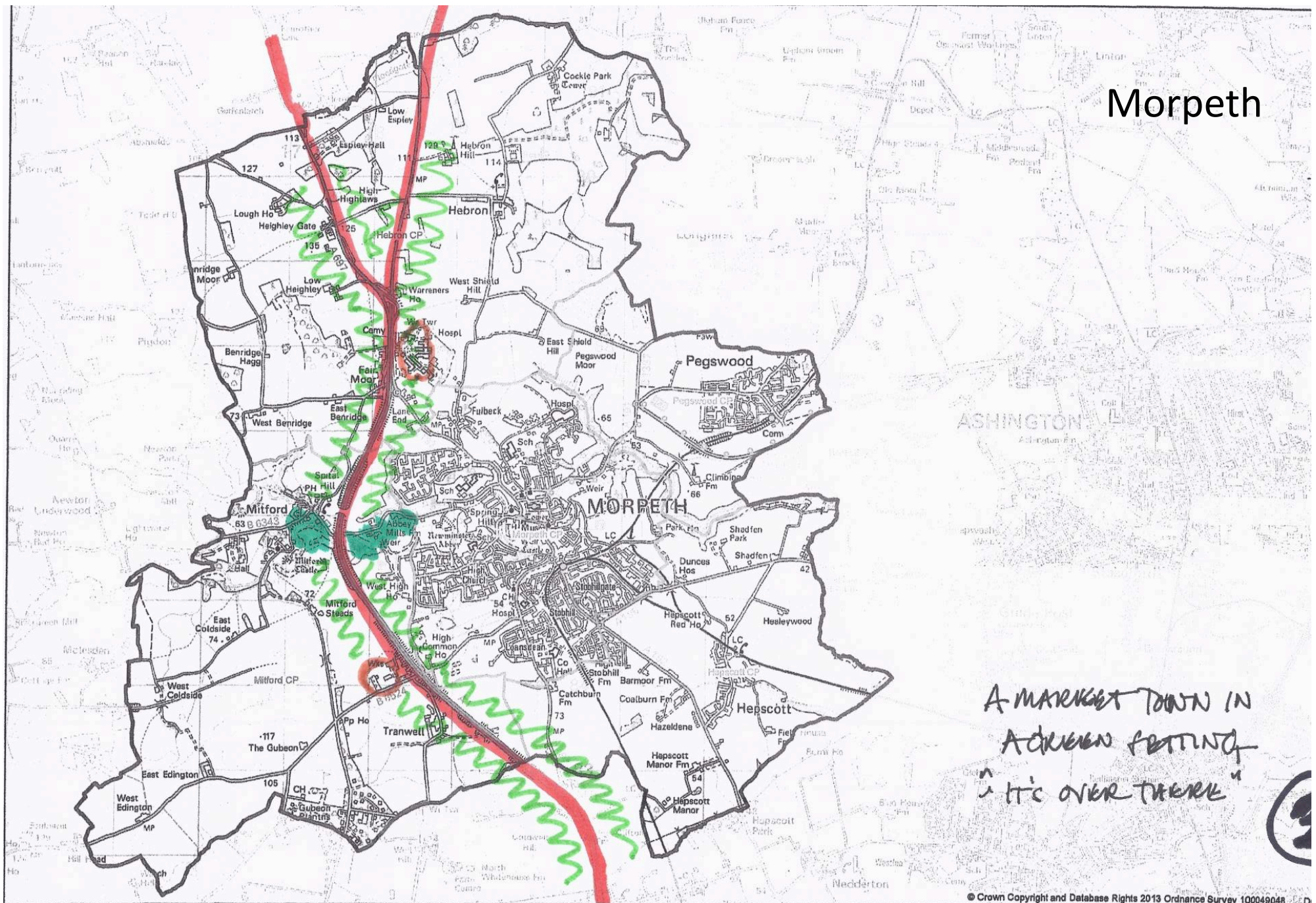
Estimated need for
250,000+ houses per
annum to catch up with
demand

BUT WHERE?



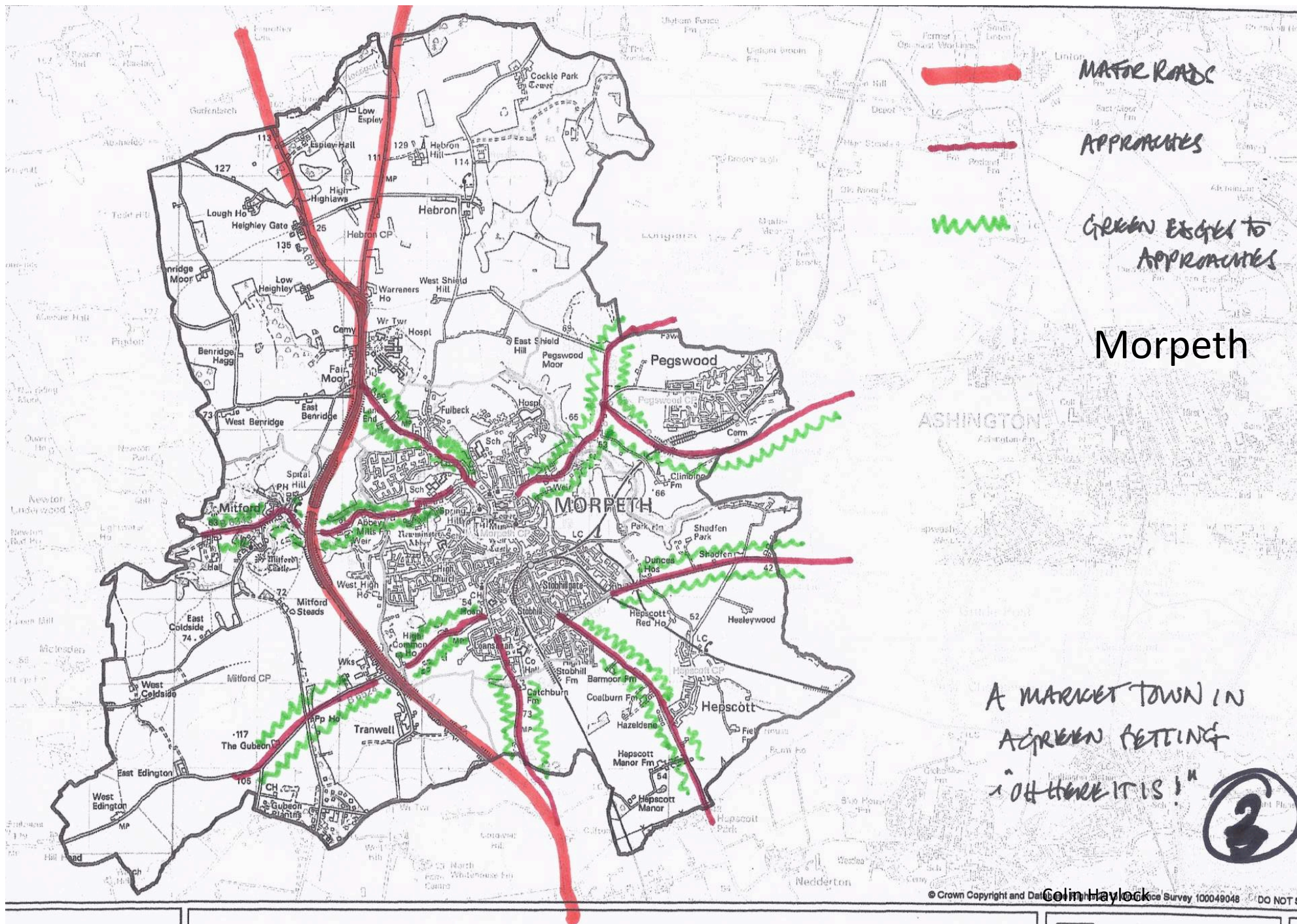


Morpeth



A MARKET TOWN IN
A DREAM SETTING
It's over there

© Crown Copyright and Database Rights 2013 Ordnance Survey 100049048



MAIN ROADS

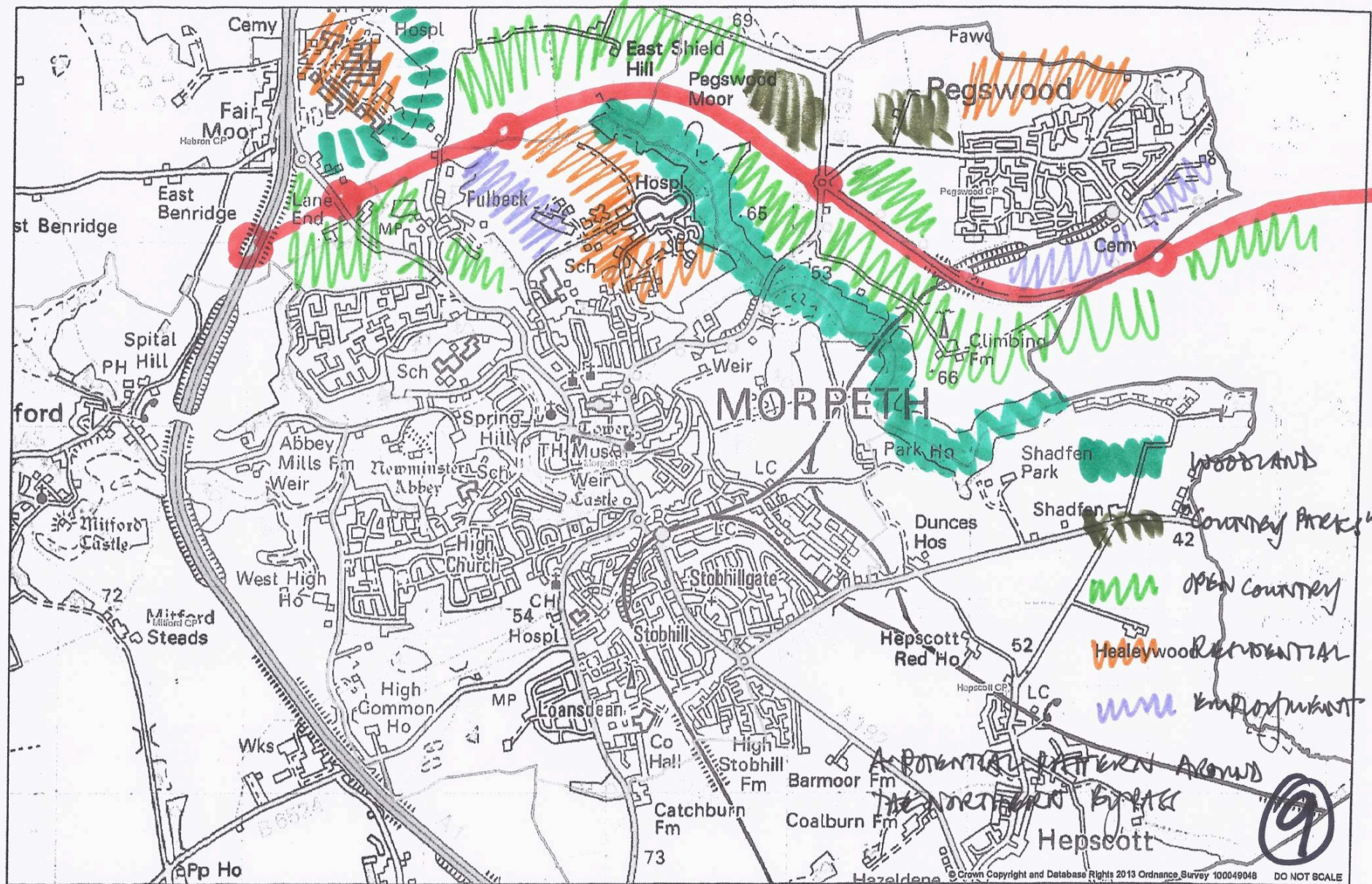
APPROACHES

GREEN BELT TO APPROACHES

Morpeth

A MARKET TOWN IN
A GREEN BELTING
- OH THERE IT IS ! "





Northumberland
Northumberland County Council

Morpeth Neighbourhood Plan Draft Plan Area

Draft Neighbourhood Plan Area
Civil Parishes



Colin Haylock

Thame : Oxfordshire

Population: 11,000

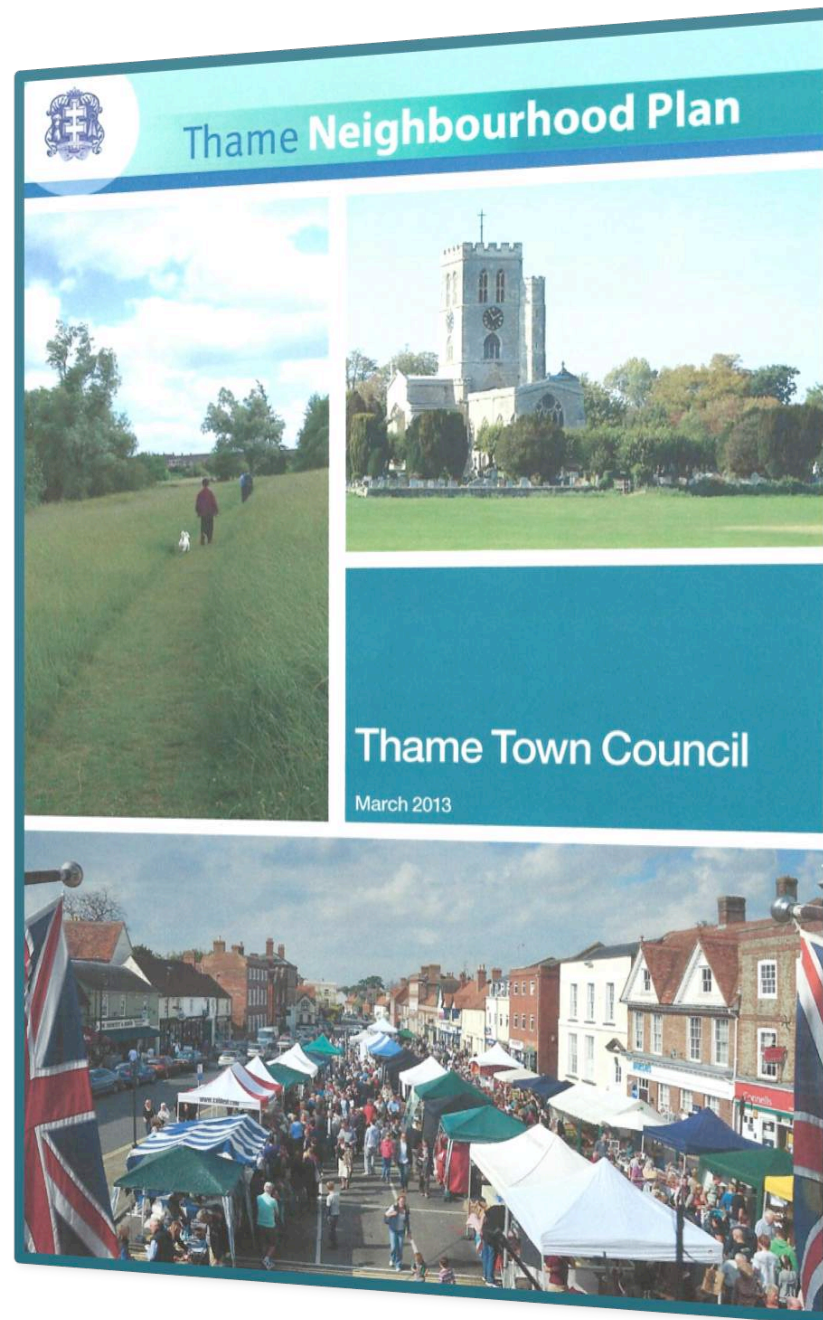
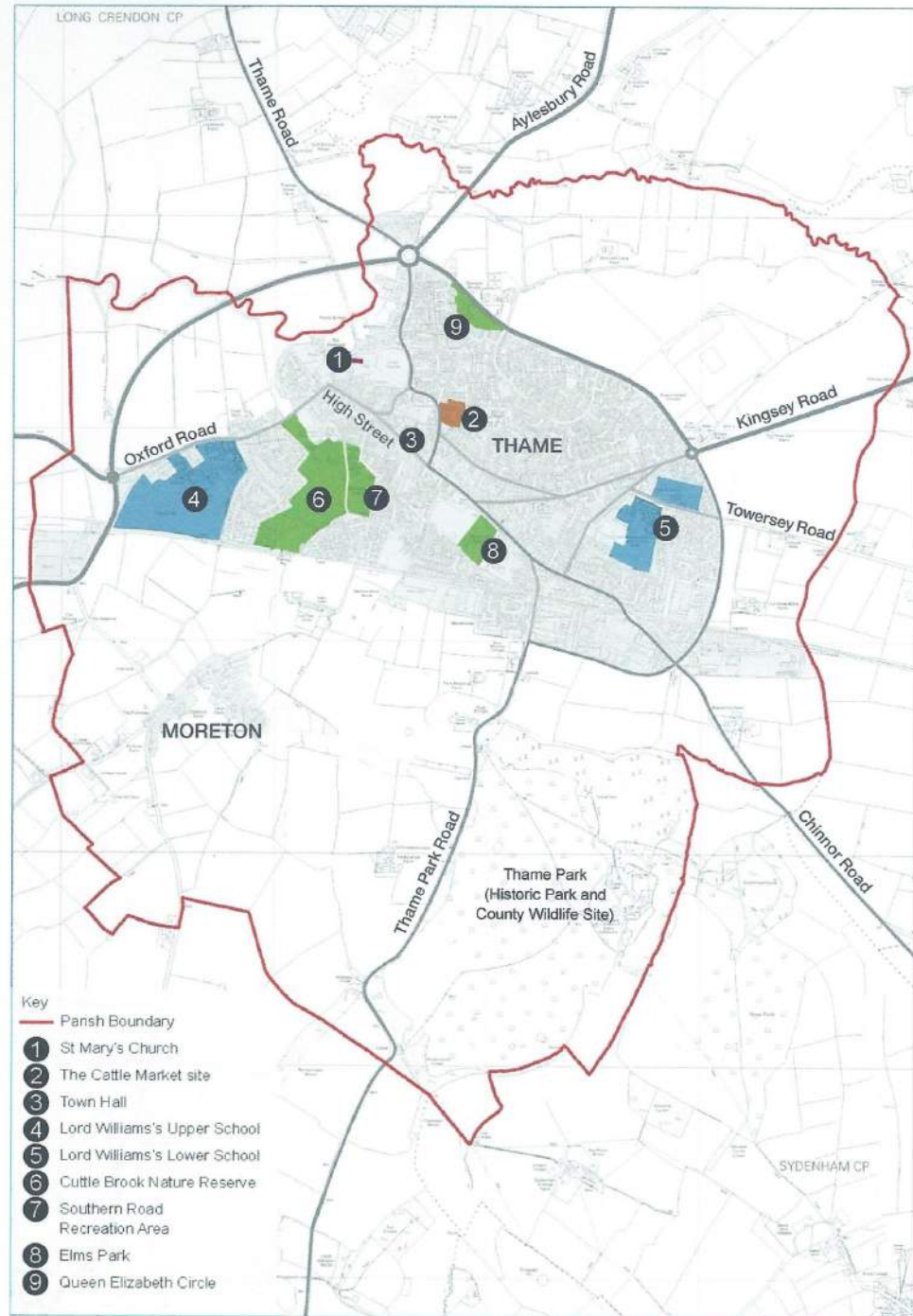
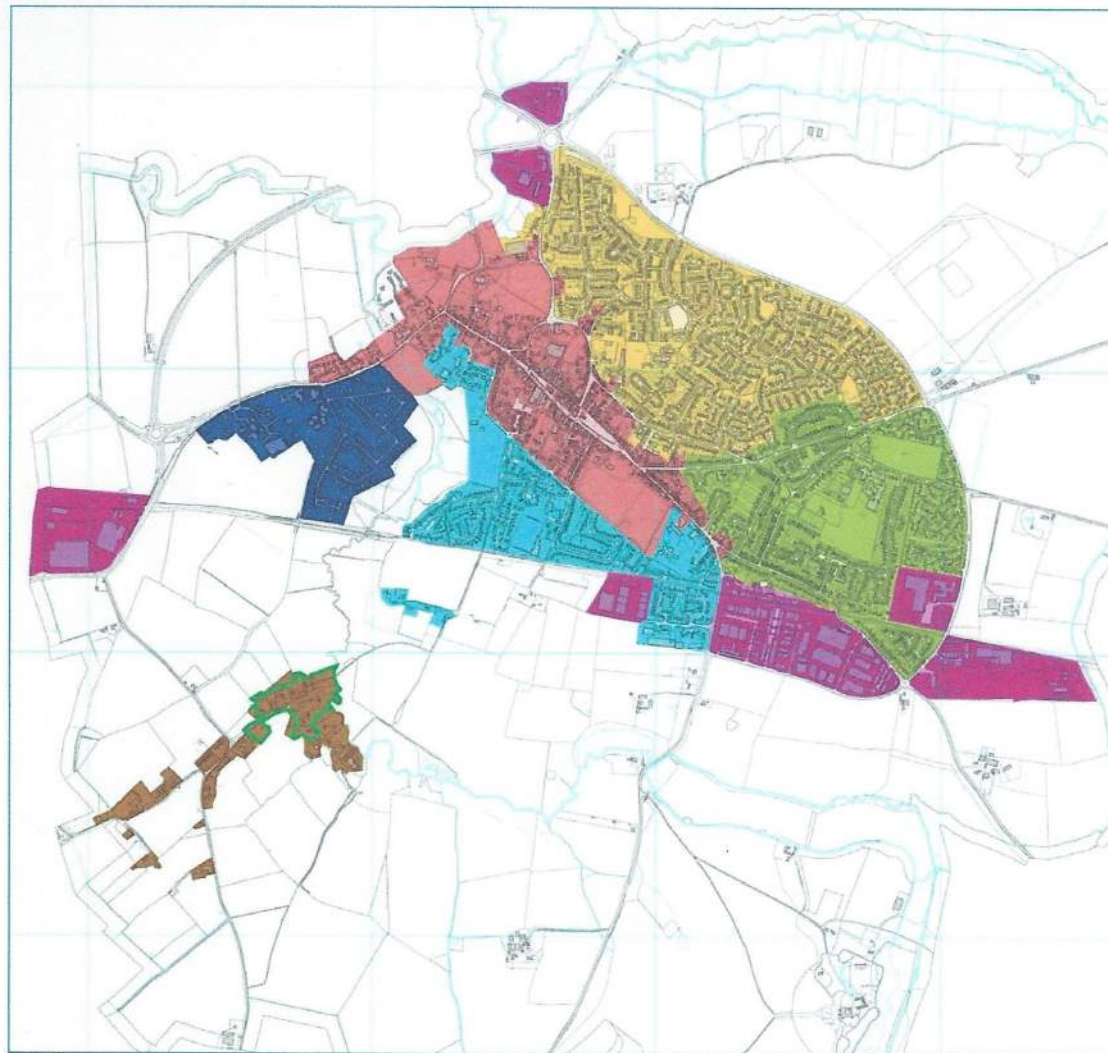


Fig 2.1: Plan showing key places in the Parish of Thame



Thame : Oxfordshire

Fig 2.3: Map of Parish showing character of built environment



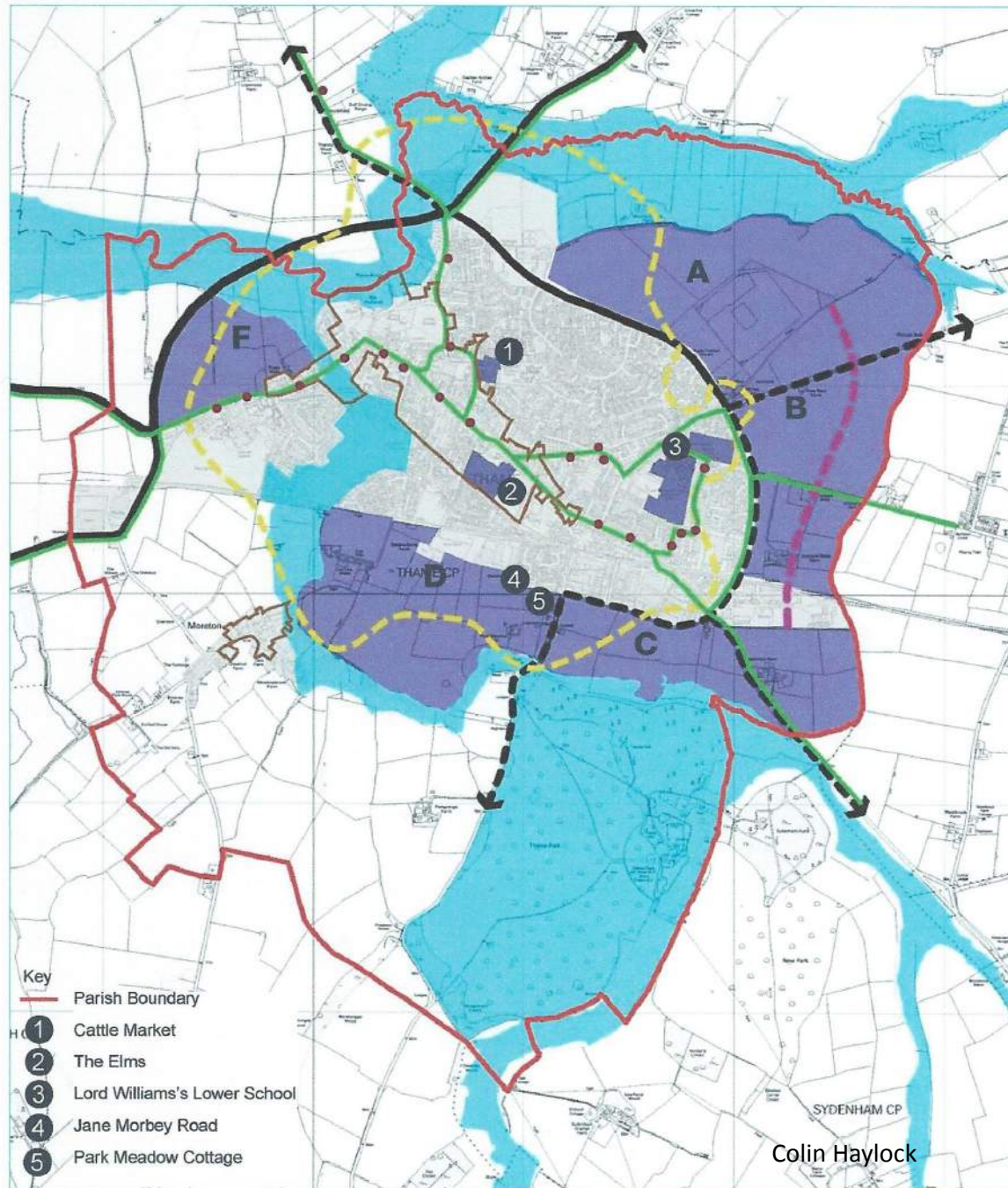
Key

- | | |
|--|--|
| Historic core
(the Thame Conservation Area) | Chiltern Vale area |
| Lea Park | Employment |
| East Road Area | Moreton Conservation Area |
| Southern Thame | Moreton Village and
neighbouring area |

Thame : Oxfordshire

Colin Haylock

Fig 3.1: Plan summarising technical spatial issues



Thame Oxfordshire

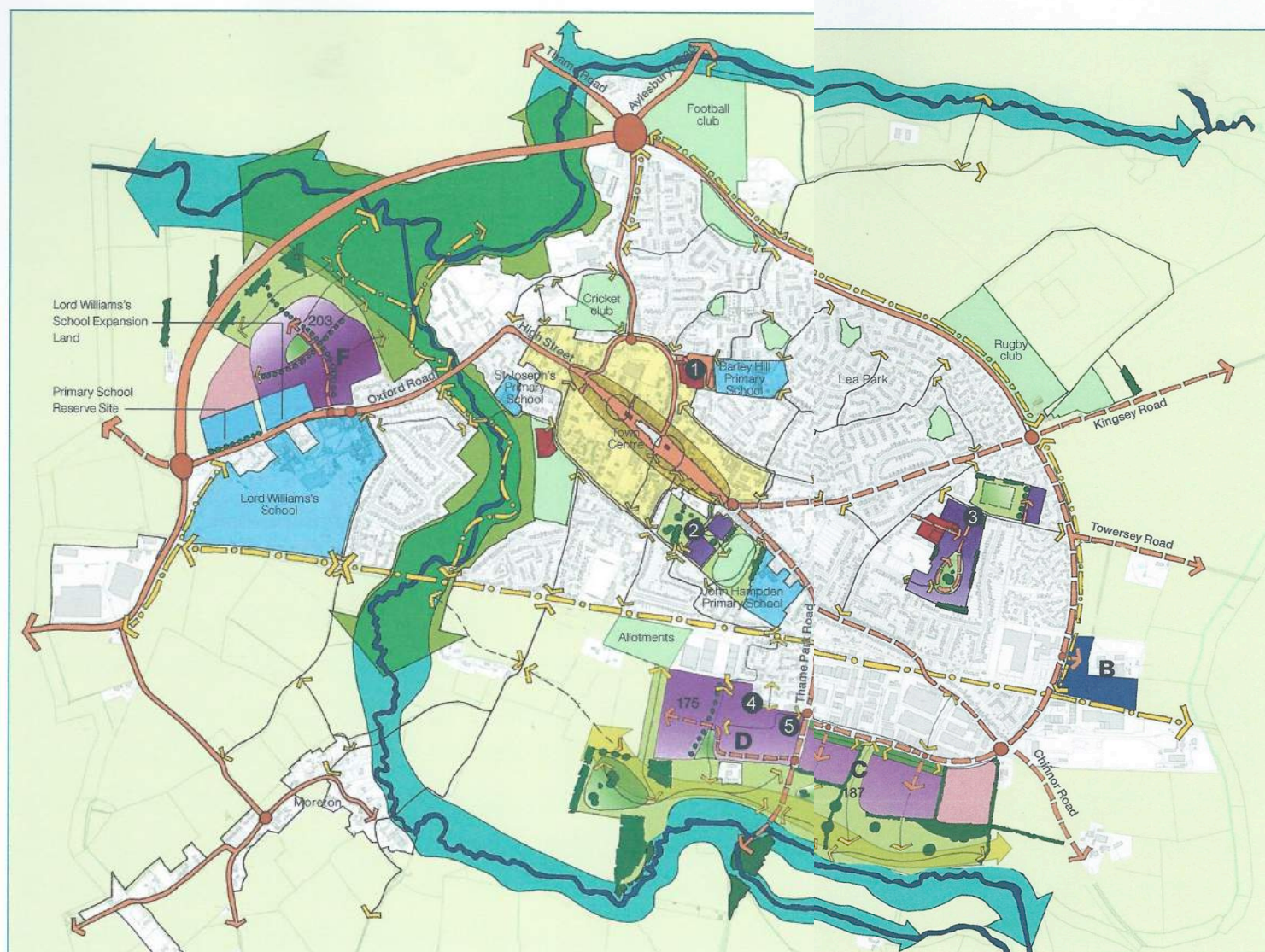
Impact?

Unlikely to meet
the housing
demand

Will capture value
for services and
infrastructure

Fig 5.1: The future vision for Thame

Thame : Oxfordshire



- Allocated residential site, including open space and buffer planting within the built up area, roads and other infrastructure.
- Potential alternative locations for new community facility
- Existing schools, expansion land for Lord Williams's School and a reserve primary school site
- Employment site (B1, B2 or B8)
- Publicly accessible open space and landscape within allocated residential site
- Natural green space within allocated residential site
- Cuttle Brook Nature Reserve: existing and proposed extension within site F
- Open land around Thame
- Existing open spaces within Thame, including playing pitches
- River and approximate extent of flood zone
- Principal vehicular movement route
- Key pedestrian routes, existing and proposed
- Reserve housing sites

- B** 3 Hectares of employment
- C** 187 dwellings
- D** 175 dwellings
- F** 203 dwellings
- 1** Cattle Market site
- 2** Land at The Elms: No more than 45 dwellings
- 3** Lord Williams's Lower School: 135 dwellings
- 4** Jane Morbey Road: 18 dwellings
- 5** Park Meadow Cottage: 12 dwellings

Colin Haylock





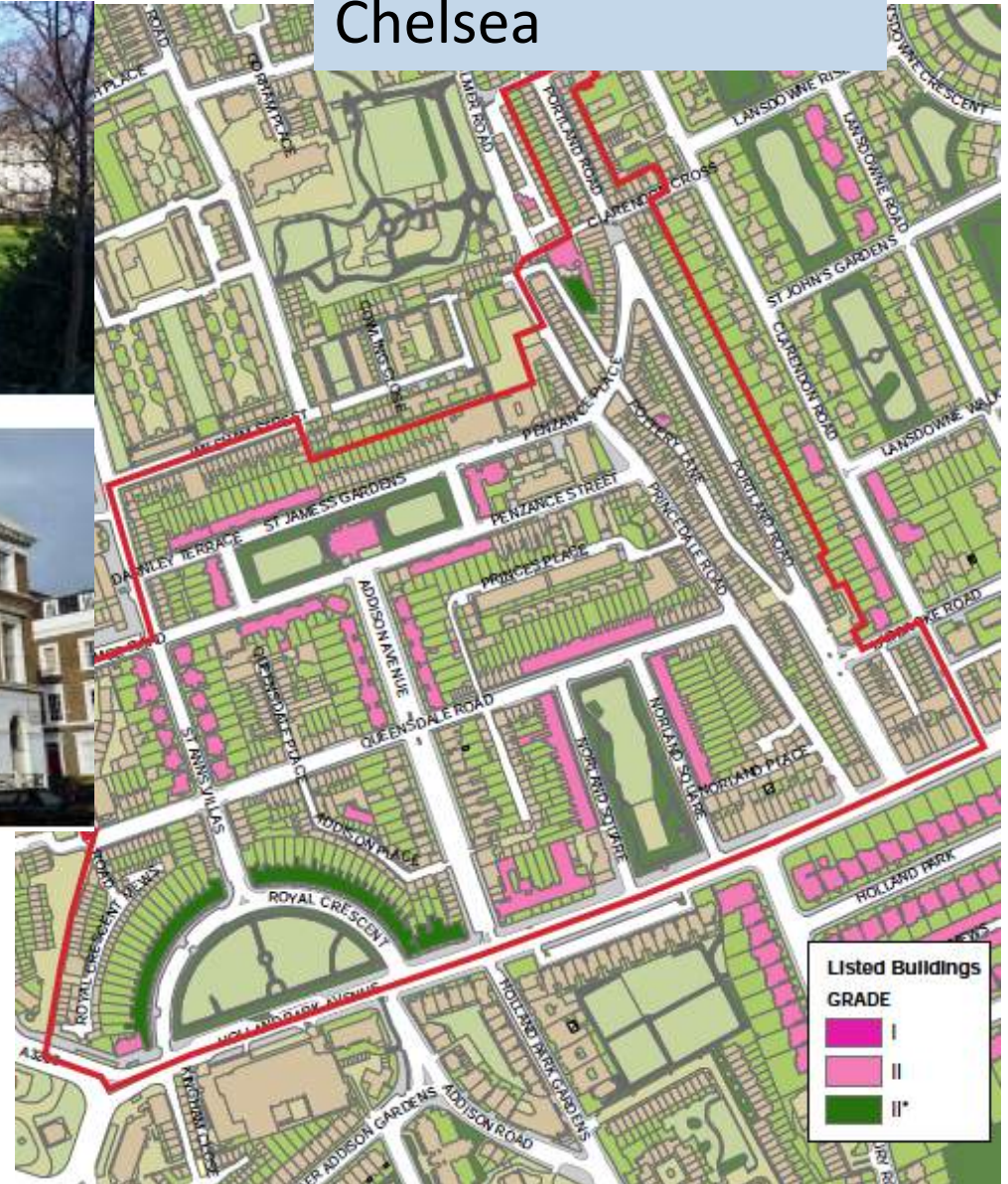
Hastoe Housing Assocn 2014

Somerstown London



<http://kevinallen.photodeck.com/media/cca48108-0843-11e0-8670-27879a26cb1a>

Neighbourhood planning in Kensington and Chelsea

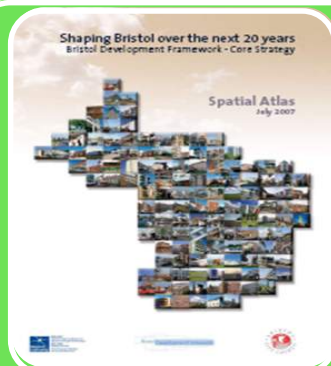


Decision making: statutory plans and the hierarchy



National Planning Policy Framework

- Policies laid down by Central Government: very broad
- Also the statutes of what is permitted



Local Plans

- Policies made by Local Government
- City council or rural council
- Mainly policy, some designation of land



Neighbourhood Plans

- Plans made for neighbourhoods by a community
- Small areas and in detail

PLANS
MUST
CONFORM



FOR SALE/
TO LET

savills.com savills

0161 236 8644

Pugh

08442 722 444

www.pugh-auctions.com



Discount Furniture Direct





bargainbuys

savings everyday

miss beauty

22"

22"

bargain b







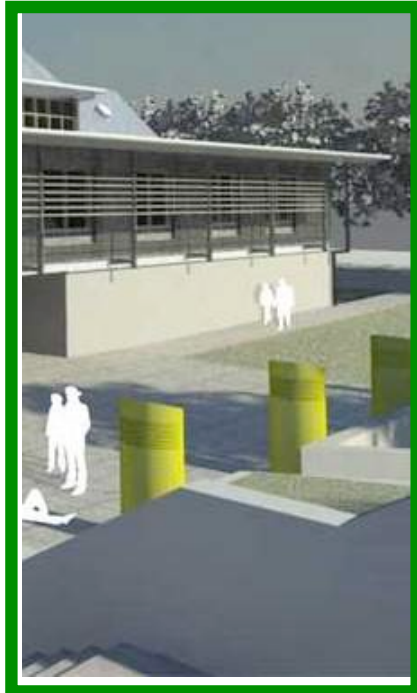








Regulations for new uses in response to climate change



Support for plan-making?

Who writes it?

Government support limited:

- RTPI Planning Aid
- Local fund raising
- Pro-bono by consultants!
- Local town planners!
- Legal processes?



Engaging with communities in England

- Who benefits? Probity issues
- Who participates?
- Capacity to prepare
- Promoting not preventing development
- Relationship with the local authority

Colin Haylock

PLANNING THE LOCAL



Janet Askew
RTPI President 2015
Janet.askew@rtpi.org.uk