

LGRC/NALC EXPO 21 JUNE 2019

Modern Local Councils

**Cllr Sue Baxter, chairman
Jonathan Owen, chief executive
National Association of Local Councils**

NALC AT A GLANCE

- Partners with 43 County Associations
- 10,000 local councils in England, 85% membership
- 100,000 councillors, £600 million precept, £2 billion contribution to improving communities
- Work with LGA, MHCLG, Defra, CPRE, SLCC etc
- £1 million budget, employ around 15 people
- 6.99p per elector affiliation fee (capped at £1780)
- 109 Great Russell Street
- 7 committees (including AGM), councillors and county associations in control

SUPPORT IS OUT THERE!

NALC and County Association membership gives you access to:

- Advice and guidance
- Training and networking
- Local Council Award Scheme
- Good Councillor Guides including on employment, finance and transparency, and neighbourhood planning
- Other guides on digital mapping, Tree Charter and Community Infrastructure Levy
- CiLCA training and qualification
- Sharing good practice such as Points of Light

RECENT LOBBYING SUCCESSES

- Secured 3 year deal on council tax referendums – subject to sector behaving itself, and we are, 4.9% increase last two years
- Persuaded Government to exempt sector from Data Protection Bill requirement to appoint external DPO officer, saving £3 million (still have to comply with other requirements!)
- Change to Data Protection Regulations exempting councillors/prospective councillors from ICO data protection fee of £40
- Budget 2018 announcement on mandatory rate relief on public conveniences, saving £4 million, bill First Reading this week
- Agreed make vexatious parish polls more difficult, regulations laid shortly
- Committee on Standards in Public Life proposes new sanctions, 6 month suspension, which NALC lobbied for
- Brexit definitely getting in the way, but also an opportunity!

SECTOR IS DOING MORE AND MORE AND REPUTATION GROWING

- Increasing recognition by political parties that sector has a key role to play
- Taking on new and wider responsibilities
- Seizing the opportunity provided by devolution and austerity
- Read Rishi Sunak's 'parish power' speech to NALC

<https://www.gov.uk/government/speeches/national-association-of-local-councils-conference-2018>

Sajid Javid's speech to the National Association of Local Councils conference 2017

The Secretary of State's speech to the National Association of Local Councils annual conference 2017.

Published 31 October 2017

From: [Ministry of Housing, Communities & Local Government](#) and [The Rt Hon Sajid Javid MP](#)

Delivered on: 31 October 2017 (Transcript of the speech, exactly as it was delivered)



Related content


[More speeches about local government from Ministry of Housing, Communities & Local Government](#)

10:29 Tue 13 Nov nalc.gov.uk

Delivered on: 31 October 2018 (Transcript of the speech, exactly as it was delivered)

Related content

- [Digital inclusion and accessibility](#)
- [Local government](#)
- [Loneliness](#)



Introduction – importance of parish councils

Thank you Sue for that kind introduction, and thank you for all of the vital work you do, strengthening local government.

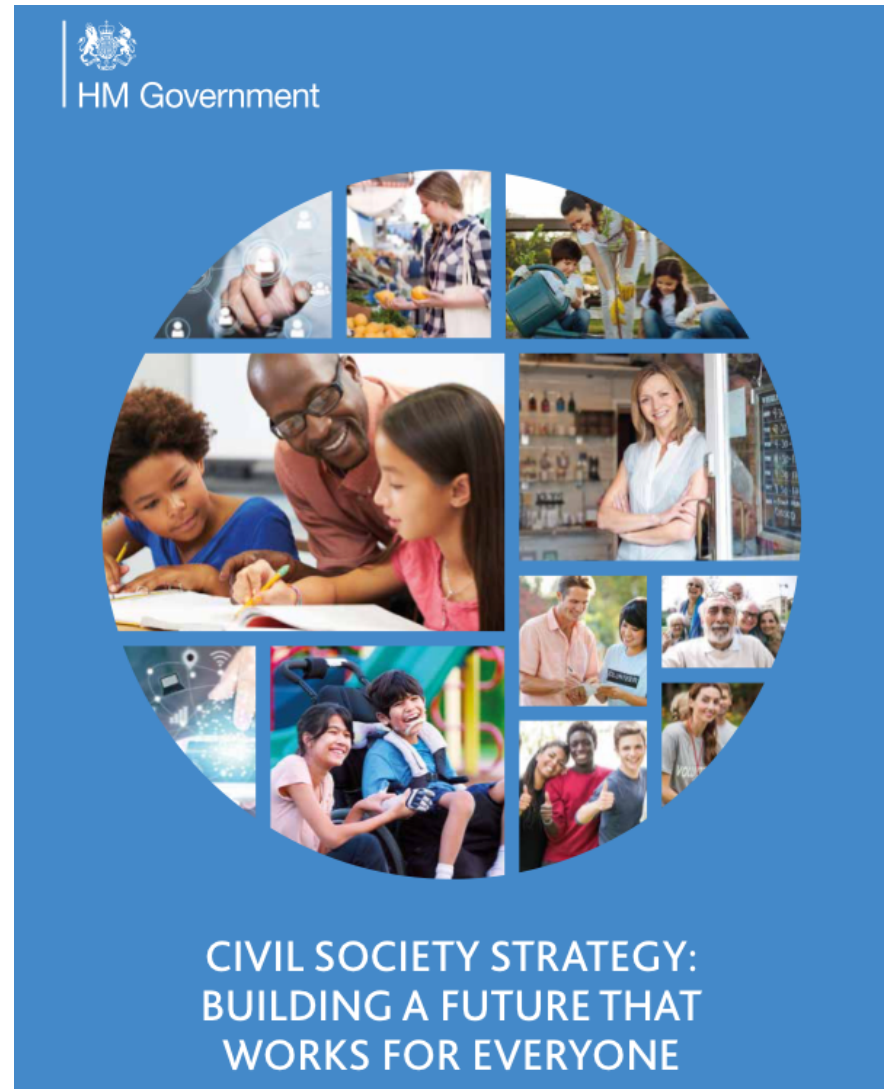
Firstly, I'd just like to say how fantastic it is to see so many of you here. I just spent some time outside speaking to people and there's a real sense of excitement and energy. This is 'parish power' in action.

The subject of today's conversations – 'shaping the future' – is one that is close to my heart.

Since taking up my role in January, I've been inspired by NALC's ability to bring new and innovative potential to the sector. And I really welcome your leadership in this area.

CIVIL SOCIETY STRATEGY

- The government wishes to go further and devolve more power to community groups and parishes
- There are opportunities for 'onward' devolution of service delivery and decision-making beyond the large regions to smaller
- Explore the option for local 'charters' between a principal council, local councils, and community groups setting out respective responsibilities





HM Government

A connected society

A strategy for tackling loneliness –

laying the foundations for change



Rural Economy Committee



Time for a strategy for the rural economy says Lords Committee

Ministers quizzed on the Government's policy on the rural economy

Access to health services and the role of the church in rural areas examined

Watch / Listen



Watch our final evidence session with Rt Hon Michael Gove and Lord Gardiner of Kimble

What's on

Status

Report published on 27 April 2019. Awaiting Government Response and debate.

Publications

[Report of Session 2017-19 - Time for a strategy for the rural economy](#) | PDF version (PDF)

Oral evidence volume: Time for a strategy for the rural economy (PDF 6.817 MB)

Written evidence volume: Time

Parish and Town Councils

230. We also heard evidence on the distinctive role of Parish and Town Councils in rural economies and as community enablers. These authorities have the benefit of being closest to the ground of any level of Government, and are also arguably the most diverse branch, ranging from parish councils covering very small villages to town councils covering sizeable towns and exercising a wide range of discretionary functions.

231. The Rural Services Network drew attention to their increasing role, stating that “there is undoubtedly scope for parish and town councils and community groups to do more, managing assets and running services. In some ways, this is a necessity because local government funding has shrunk to such an extent that many services will otherwise disappear”.¹⁷⁷

232. Hampshire County Council noted that it had built on its partnership with the Hampshire Association of Local Councils to develop a Rural Community Fund, which “will partly be used to support Hampshire’s 260+ parish and town councils to design more innovative local solutions that support rural communities and their local economies, and in turn reduce pressure on County Council services”. It cited as a case study an investment from the Fund to help upgrade and develop the infrastructure and services of a village shop in the parish of Chilbolton.¹⁷⁸

233. The National Association of Local Councils (NALC) cited as good practice a joint initiative from a group of parish councils in Kent to finance a community transport minibus scheme to aid accessibility. It also highlighted that a number of parish and town councils had worked in partnership to support rural affordable housing, including Gnosall Parish Council in Staffordshire, which had worked with a housing association and building contractor to identify a rural exception site for the development of shared ownership and affordable rented homes. NALC stated that “we would like to see collaboration like this promoted as best practice to ensure that affordable housing remains at the forefront of rural planning policy”.¹⁷⁹

Figure 15: Gnosall Parish Council in Staffordshire worked with partners to identify a site in the village for the development of affordable housing



NALC'S BIG CONVERSATION AND NEW VISION FOR SECTOR

- Big conversation on future of local councils: heard from councils, county associations and others including think tanks
- Local councils will be at the centre of community effort
- The natural focus of a range of public activity and service delivery
- Giving a democratic voice to those communities in the deliberations of other agencies
- Vibrant, dynamic, and effective local councils will help communities to help themselves building strength and resilience and improving the quality of life of residents
- And we're about to hear from one right now!

WHAT A MODERN LOCAL COUNCIL WILL LOOK LIKE (1)

- Every community to have an elected body of 12 local residents of all ages and from all backgrounds: their community council
- With a paid official (or community facilitator) supporting them to:
 - provide a safe community space for groups to meet and for citizens to find out what's going on
 - engage residents in creating a vision for the future of their community
 - give that community a voice in deliberations of others to deliver that vision – business groups, councils, police, health and government

WHAT A MODERN LOCAL COUNCIL WILL LOOK LIKE (2)

- Deliver that vision by shaping housing, roads, public amenities and other development in an effective neighbourhood plan
- Bring volunteers and voluntary groups together to support lonely people, older people, vulnerable people and youth
- Providing local services that people want – from events and parks to theatres and play provision
- Raising around £100 per year from each household to support this work and able to raise revenue from other sources and borrow to support local activity

NEW VISION FOR NALC AND COUNTY ASSOCIATIONS

- NALC will be a modern, in-touch organisation that delivers high quality services and works in partnership with County Associations to support and promote local councils, their staff and their councillors.
- We will have healthy and strong County Associations working individually and increasingly together, supporting and being supported by NALC

NEW STRATEGIC AIMS AND DIRECTION

- Strong national and county voices promoting the sector and our prospectus for ultra localism
- Promoting and creating local councils in England
- Supporting councils and councillors
- Effective national and county associations working together to promote and support sector
- Focus on our new member services team

BUT WE WILL NEED HELP AND SUPPORT FROM OTHERS

- We have real potential to reach 10,000 councils and 100,000 councillors and offer to help the government and country tackle challenges it faces, especially post-Brexit
- But to make the most of this opportunity we will need the help of Government and principal councils
- This is the focus of our dialogue with MHCLG and the Treasury as part of the Comprehensive Spending Review (CSR)
- CSR priorities: fair funding through council tax referendum principles and access to government funding, help provide community assets through business rates reform including: toilets and building capacity through share of sector support

ANNUAL CONFERENCE AND EXHIBITION

- 28-29 October 2019, Doubletree by Hilton Hotel, Milton Keynes
- Biggest event in sector calendar attracting over 400 attendees
- High profile keynote speakers including government minister, high streets and town centres expert, and a very special guest
- Sector specific exhibition of suppliers and organisations to help local councils, including NALC partners BHIB Councils Insurance, Blachere Illumination and CCLA
- Workshop sessions to gain new information and skills, share good practice, and hear updates on our work and campaigns; themes include health and well being, community engagement, young people and the Comprehensive Spending Review
- Conference dinner and Star Council Awards 2019 presented by Lord Lieutenant of Buckinghamshire
- Last year sold out! So make sure you secure your place at:
www.nalc.gov.uk/our-events/annual-conference-2019



HARPENDEN
TOWN COUNCIL

CLOSER TO THE COMMUNITY

nalc
National Association
of Local Councils

THANK YOU

w: www.nalc.gov.uk | e: nalc@nalc.gov.uk | t: 020 7637 1865