

NALC ANNUAL CONFERENCE 2015



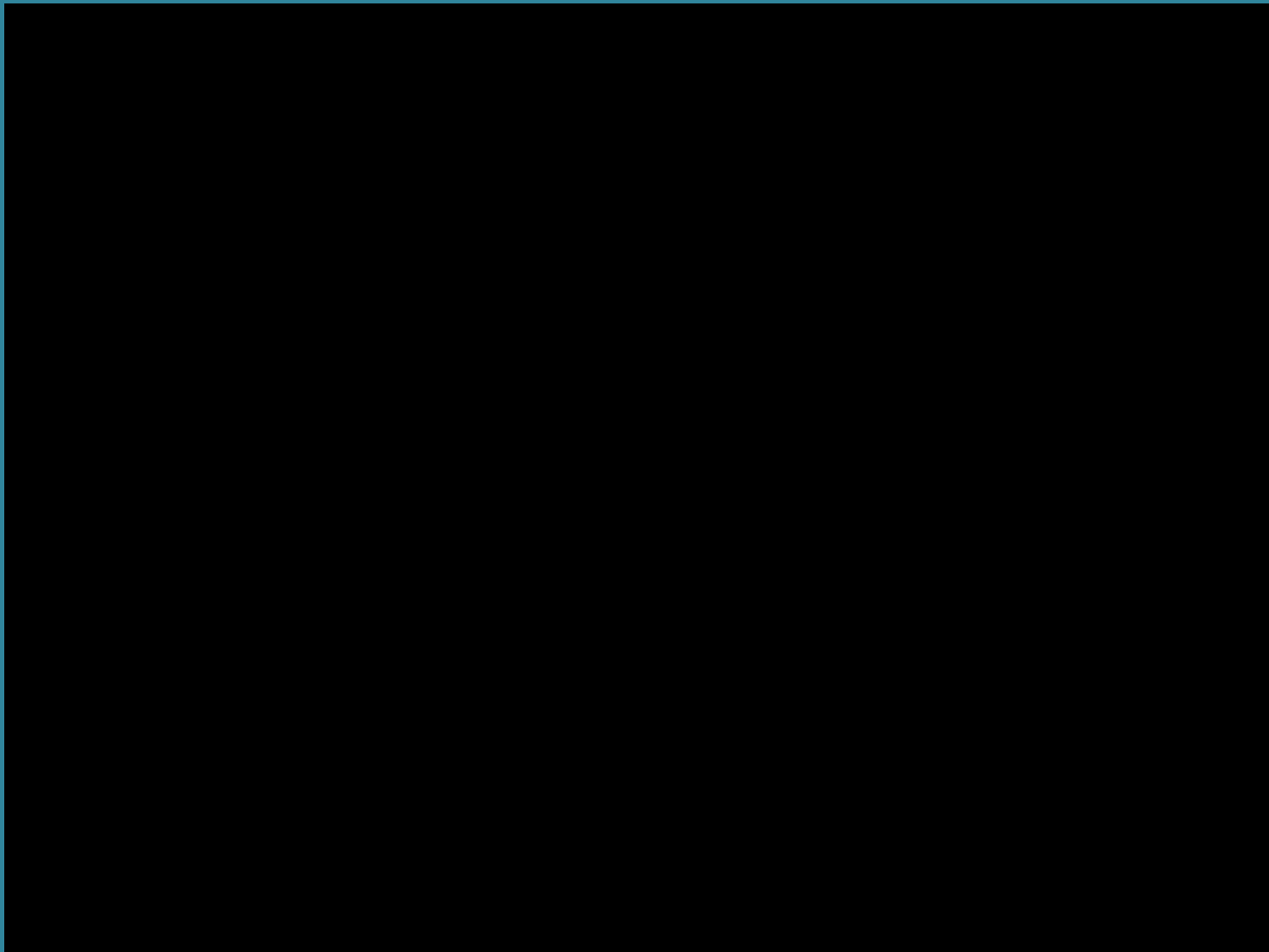
#nalcevents

SESSION A

CLLR RAYMOND
HASSALL, LORD
MAYOR OF
BIRMINGHAM

SESSION A

MARCUS JONES MP,
MINISTER FOR
LOCAL
GOVERNMENT



SESSION A

NATIONAL COUNCIL



#nalcevents

Affiliation Fees 2016-17 : presentation on behalf of the Finance Committee

Keith Stevens
Vice Chairman
Finance Committee

Sound Financial Management

- Series of unqualified accounts
- Positive outturns
- Scrutiny and remuneration panel
- Quarterly financial reports
- Robust asset base – 109
- We will deliver whatever the AGM decides

Strategic Plan – Financial Principles

- 3 year strategy backed by 3 year financial plan
- Build reserves
- Increase contribution from fees and reduce dependency on other income streams
- Strengthen core membership offer to councils – fewer “add-ons”

Sound finances deliver

- Winning confidence of government
- £4.7m transparency grant - £100,000 of applications already received for 200 smaller councils
- £540,000 to set up sector led body to procure audit services, saving councils costs of procurement and setting up independent audit panels
- £1m grant to CALCs and communities to set up new councils
- £30m 2013-18 to support neighbourhood planning
- £31m of council tax funding passed on 2014/15

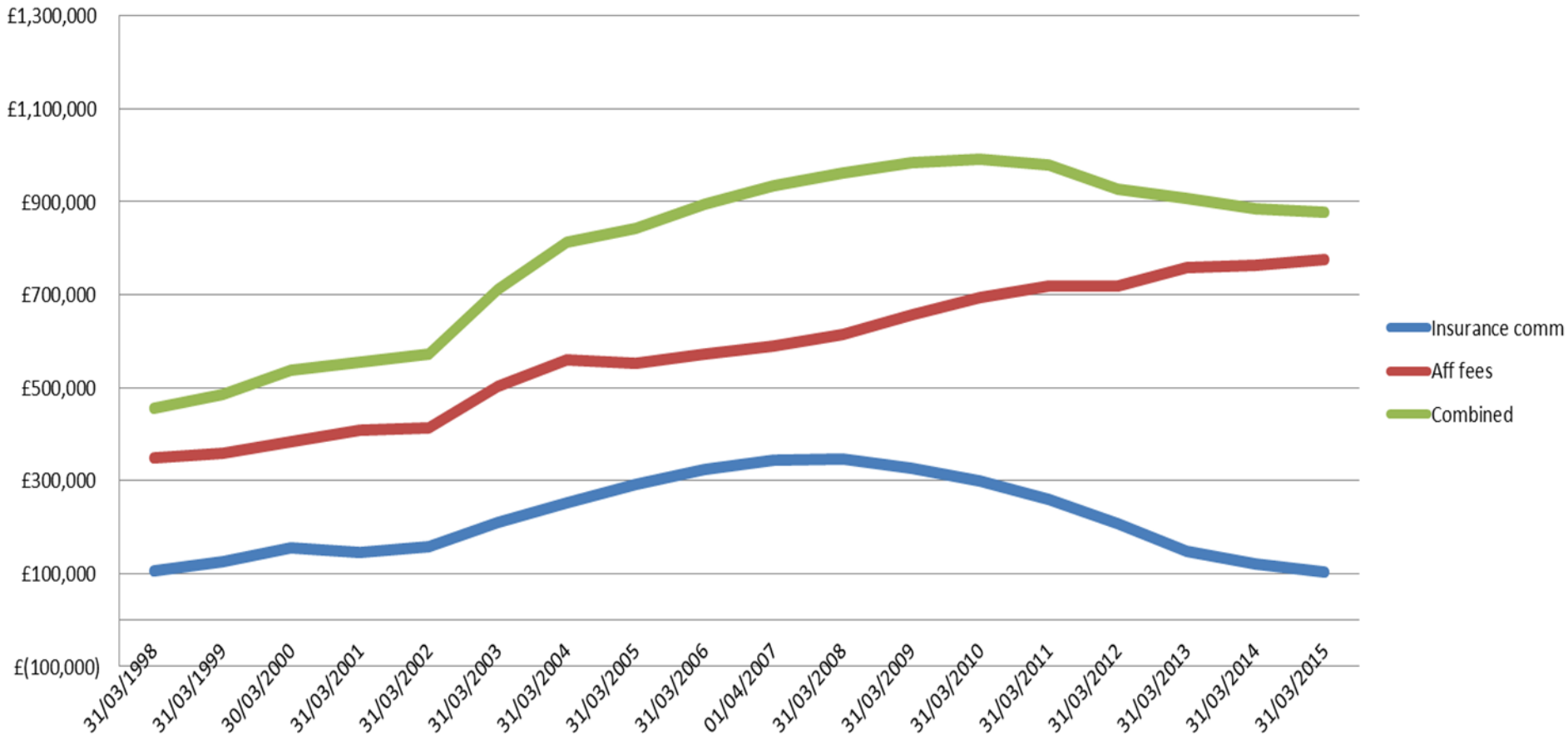
Sound finances deliver

- High quality services, still improving
- 100+ legal topic notes and financial briefings
- 620 legal and financial queries dealt with - £400,000+ in commercial rates
- 27 free events and conferences (in 2015)
- Free digital LCR, 100 bulletins updating on topical issues including accessing external grants
- Toolkits – procurement, communities and Neighbourhood Planning
- 325,000 page views of website resources

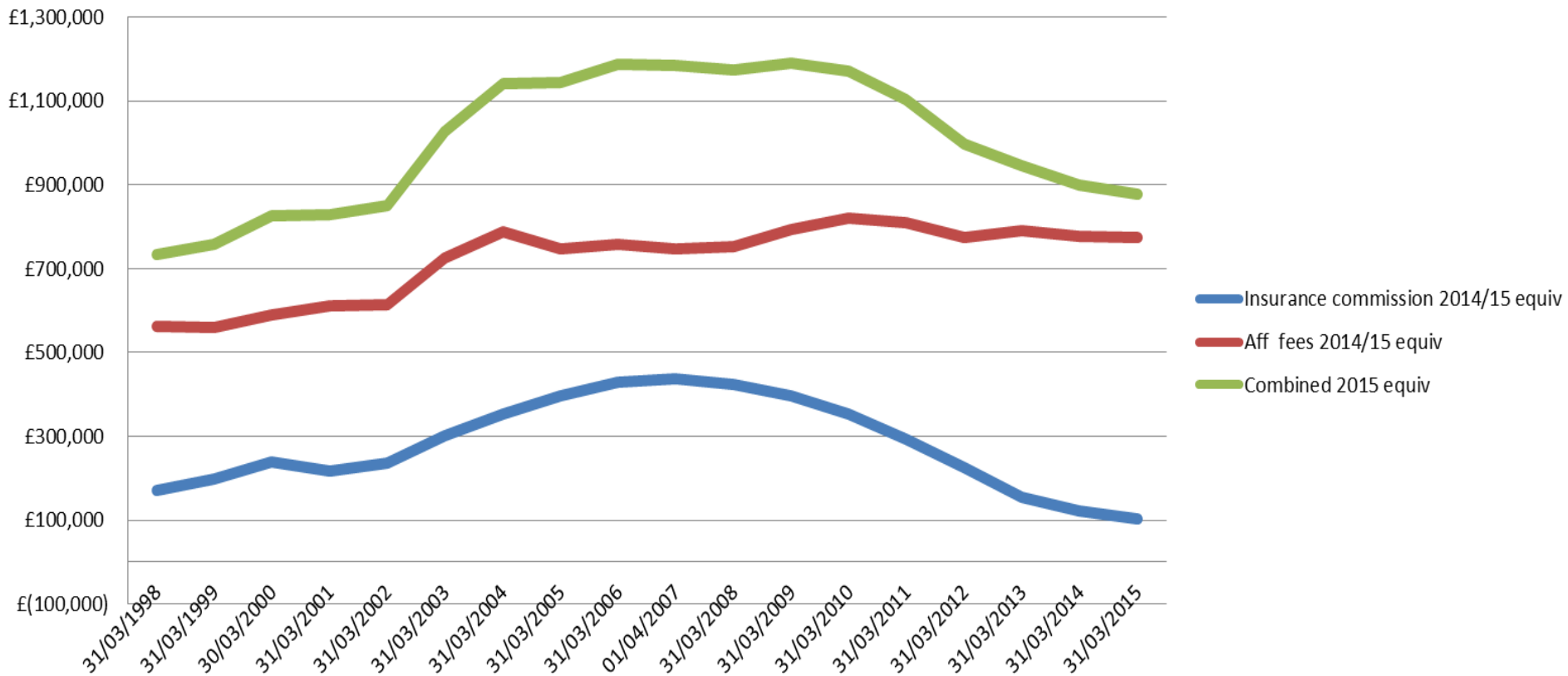
The financial challenge

- Reduced income from commissions £50,000
(and continuing uncertainty)
- Unavoidable Pension and NI costs £36,000
- Contribution to reserves £5,000

Affiliation fees and Insurance commission 1998 to 2015



Affiliation fees and Insurance commission at Dec 14 Equivalent value- based on RPI



AGM affiliation fee review

- Previous AGMs have asked for Finance and Executive Committee to look at the affiliation fee with a particular emphasis on a cap for larger councils

Affiliation fee proposals

- A maximum fee of £1,750 to attract more of the larger and new councils into membership
- A minimum fee of no more than £33 to reflect the services that all councils can access
- This could include “free” NALC membership for the very smallest
- A new flatter methodology
- £2.25 collection fee to contribute towards CALC costs

Feedback on proposals

- A big change, need more time to understand and model
- Minimum fee could have a big impact especially in counties where there are lots of smaller councils and a minimum fee already set
- Support for a maximum cap but question over level
- Questions about collection fee
- Significant increase in a difficult time

A way forward

- Further discussion and modelling especially of minimum fee and collection charge
- Implement the £1,750 max – something that AGM has been pressing for 2 years
- Consider proposal to increase affiliation fee to 6.6p per elector to consolidate progress and enable the sector to capitalise on opportunities ahead

Following feedback from a number of CALCs on the affiliation fee proposals we will be recommending to Council a revised motion as follows:

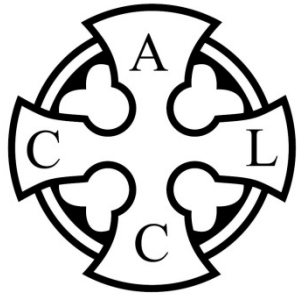
“That Council recommends to the AGM :

1. That consideration of the proposed introduction of a new methodology and minimum fee be deferred to enable further consultation and modelling to take place and a full report be made to next year’s AGM;
2. Introduce a maximum fee of £1750 in the light of the AGM’s discussion of this matter in previous years; and
3. An increase in the affiliation fee from 5.6 to 6.6p per elector for 2016/ 17

It is proposed that there will be a separate vote on each element of this proposal.”

SESSION D

DEVOLUTION OF DISCRETIONARY SERVICES



Devolution of Discretionary services The progress in Cornwall so far.....

NALC Conference
27 October 2015
Birmingham

Rob Andrew Assistant Head of Service: Localism
and Devolution - Cornwall Council

Sarah Mason Chief Officer - Cornwall Association
of Local Councils (CALC)



Background

- Rurally dispersed population of 530,000
- Unitary in 2009 – previously Cornwall County Council and 6 District Councils
- 123 Cornwall Council Members
- History of “political coalitions” and of in-house service provision
- 213 Town and Parish Councils
- Vibrant VCSE community
- Low-wage economy / high % SMEs

Current Context

- Cornwall Council facing £196M budget savings
- Pressure on discretionary community based services
- Some externalisation of services
- Closer working with TPCs / VCSE
- “One Public Estate”
- Infrastructure investment
- 160+ Agency Agreements with TPCs
- 50+ Neighbourhood Plans being developed
- 80+ Community assets listed
- 80+ Community Emergency Plans in place / being developed

Preparing the landscape

- Create the right overall culture – build Trust
- Promote local collaboration
- Recognise that every community is different
 - Local ambition?
 - Local partnerships and collaboration?
 - Trust of local community?
 - Local capacity?
- Carrots work better than sticks
- Culture of peer support
- Recognise it takes time

Developing the Culture

- Close working relationship with CALC and SLCC
- SLA with CALC
- Critical friend
- Joint training partnership
- Representation on Devolution Board
- Attendance at officer meetings
- Evidence to Devolution Policy Advisory Committee
- Support to Community Link Officers
- Thematic forums – Planning, Waste, Transport

Capacity Building and Challenge

- Challenge around promoting need to improve capacity – promoting awareness
- Utilise European Funding
- Producing checklists / model specifications
- Creating local support peer support groups
- Communicate benefits and successes!
- Local accountability – complimentary representative and participative democracy
- New model(s) of governance and delivery
- General Power of Competency

Cornwall's Devolution Framework



Devolution Framework – 6 Options

- Option 1 – Influencing / Monitoring
 - Street Cleansing
- Option 2 – Joint / enhanced delivery
 - Environment, Traffic Enforcement
- Option 3 – Agency Agreements, Licenses
 - Grass cutting, roundabout sponsorship
- Option 4 – Delegated Delivery
 - Formal gardens, Libraries, One Stop Shops
- Option 5 – Services cessation
 - Public Conveniences, allotments
- Option 6 – Retained
 - Winter maintenance, coast protection

Devolution Challenges

- Identifying “true” current costs – operational & management
- Conflicting priorities – income earning assets for individual services v. wider overall council savings
- Resources to undertake this work – an additional activity to the traditional ‘core offer’
- Negotiations take time and need continuity
- Capital injections can assist in driving proposals forward that might otherwise fall
- Balancing the views of social value v. capital receipts v. revenue costs

Case study – Tintagel Visitor Centre



Case study – Municipal buildings, Falmouth



Case study – St Day clock



Case Study – Jubilee Pool, Penzance



Case Study – Portwrinkle



Unintended Consequences

- Waste Contract
- To “value” or not to “value”
- “Swiss cheese” effect
- Car Park Orders and enforcement
- TUPE and pensions
- Insurability

The Future?

- Changing role of Town / Parish Councils
- Changing role of Parish Clerk – Parish Manager?
- Raising appreciation of the role (£) of the Clerk!
- 4 year business plans?
- Govt. Funding – Our Place, Power to Change etc.
- General Power of Competence
- Arms length trading opportunities?
- Formal / informal mergers/ clusters?
- Different local aspirations, money, capacity, social capital differ

In conclusion

- There are competing priorities within Cornwall Council, with partners and within the community.
- Long term v short term
- Devolution **TAKES TIME** and requires willingness, resources, time, capacity and skills that only some local councils possess
- Confidence grows incrementally within a community and lead to larger projects being tackled.
- The devolution process requires dedicated staff internally and community support externally.
- Each community is different!



**The Sky is the
Limit!!**

Contact details

Website

- <http://www.cornwall.gov.uk/community-and-living/devolution-giving-communities-more/>

Email

- randrew@cornwall.gov.uk
- ssharples@cornwall.gov.uk
- devolution@cornwall.gov.uk
- enquiries@cornwallalc.gov.uk

SESSION F

LOCAL GOVERNMENT FINANCE

Fairer funding			
Policy issue/subject	NALC Policy position	Current situation	Comment/issues
Parish precepts	<ul style="list-style-type: none"> Local decision Fiscal responsibility Communications & community engagement 	<ul style="list-style-type: none"> 2015/16: £409m total , £54.12 band D, 3.3% increase, 1.7% total council tax take Last 3 years +5.2%, +4.3%, +3.3% 	<ul style="list-style-type: none"> Fiscal responsibility Communications & community engagement Promoting achievements & impact Ongoing impact of council tax support funding & devolution Presentation of council tax bills
Council tax referendums	<ul style="list-style-type: none"> Opposed measure in Localism Bill Campaigned against extension to parishes 	<ul style="list-style-type: none"> Interest by previous ministers Open question on extending to larger questions Not extended as result of lobbying 	<ul style="list-style-type: none"> Continue to oppose extending to larger questions Change of emphasis & tone by new ministers? Spending Review, Autumn Statement, Local Government Finance Settlement Impact on devolution
Council tax support funding	<ul style="list-style-type: none"> Ensure funding passed on 	<ul style="list-style-type: none"> £80m 2013-15, £70m passed on £40m in 2013/14, £39 passed on Invisible £40m 2014/15, £31m passed on Invisible £40m 2015/16, £? passed on 	<ul style="list-style-type: none"> Continue to press for funding to be passed on Spending Review, Autumn Statement, Local Government Finance Settlement
Community Infrastructure Levy	<ul style="list-style-type: none"> Ensure communities benefit from development 	<ul style="list-style-type: none"> Only 100 charging authorities £92k out of £9m in 2013/14 	<ul style="list-style-type: none"> Press for CiL to become mandatory Increase % share Government review
New Homes Bonus	<ul style="list-style-type: none"> Ensure communities benefit from development 	<ul style="list-style-type: none"> Mixed picture, limited evidence 	<ul style="list-style-type: none"> Ensure communities benefit from development Research and promote good practice Future of New Homes Bonus
Business Rates/NNDR	<ul style="list-style-type: none"> No share for parishes since 1990 reforms Campaign for 5% share Exempt public toilets from NNDR 	<ul style="list-style-type: none"> HMRC Review SCA proposal by Sevenoaks Town Council SCA proposal by Cranleigh Town Council 	<ul style="list-style-type: none"> Government announcement on business rates Continue with campaign Test through pilots Promote economic development role of parishes and impact on local growth
Council tax collection fund surplus	<ul style="list-style-type: none"> Explore further 	<ul style="list-style-type: none"> Task & Finish Group Share of risk & reward 	<ul style="list-style-type: none"> Limited evidence Continue with work?

NALC ANNUAL CONFERENCE 2015



#nalcevents

SESSION J

ANNUAL GENERAL MEETING 2015



#nalcevents

SESSION J

WELCOME:
BRIAN KERR OBE,
CHAIR OF THE AGM



SESSION J

CLLR ERIC KNIBB,
WARWICKSHIRE &
WEST MIDLANDS
ASSOCIATION

SESSION J

AGM BUSINESS



#nalcevents

SESSION J

JONATHAN OWEN, NALC STRATEGIC PLAN

The Annual Report and Strategic Plan – the story of the last year

- First year of new strategic plan, significant elements delivered
- Communications improved
- Confidence of Government secured – leading to tangible benefits
- Closer working with CALCs and SLCC
- More councillors engaged in task and finish groups, roundtables and as policy makers on AGM and National Council
- Today's event!
- Huge opportunity for sector
- New implementation programme sets out objectives for next year to capitalise on that

43 County Associations – key customers

3 CALC representatives

AGM

- Sets strategic work plan annually
- Sets affiliation fees
- Sets policy priorities

1 CALC representative

National Council elects:

- Officers
- Executive Committee
- Finance Committee
- Policy Committee
- Larger Councils' Committee
- Smaller Councils' Committee
- Scrutiny
- Improvement and Development Board reps
- (all meet 4 times a year)

NALC strategic Plan Priority 1 – improve services

- Better communications including New website – 325,000 web page views
- Dashboard of key PIs to track service standards
- Audit Practitioners Guide
- 100 New and revised legal topic notes and financial briefs, 625 queries dealt with
- New CiLCA
- Sector led body for Audit
- User groups
- Local Council Award scheme – 700 councils
- £4m transparency fund secured
- Procurement toolkit
- Elections hub
- Our place pilots secured
- Effective committee work programmes
- Super councils network and Associate membership of LGA
- Conferences and free workshops

COUNCIL OF THE WEEK



Stone Parish Council



Antrobus Parish Council



Bembridge Parish Council



Billingham Town Council



Waltham Abbey Town Council



Frome Town Council



Bracknell Town Council



Clutton Parish Council



Cornsay Parish Council



Lydney Town Council



Uppingham Town Council



Lakes Parish Council



Welsh Newson and Llanrothal
Group Parish Council



Shrewsbury Town Council



Cranleigh Parish Council



Danbury Parish Council



Hook Parish Council



Sibbertoft Parish Council



Saughall and Shotwick Park



Campbell Park Parish Council



Sevenoaks Town Council



Thatcham Town Council



Whittington & Fisherwick
Parish Council



Queen's Park Community
Council

Priority 2 New Councils and grow membership

- 150 campaign areas supported and funding for 2015 secured (though reduced) – support from Oliver Letwin
- Create a council champions events
- New councils set up or planned: Queen's Park; Badgers Mount; Chadwick End; Finham; Westgate; Macclesfield; Whitehaven; Penrith; Sutton Coldfield; Kidderminster; Ashford; Pannal; Bingley
- Membership pack, new returners include: Burgess Hill; Uckfield; Clevedon; Winkfield: Sandwich.

Priority 3 Promotion and lobbying

- Electronic agenda and payments success
- Grant funding secured : neighbourhood planning, community rights etc.
- Ministers continue to press principal councils to pass on council tax funding
- Fly the Flag day (Commonwealth and Queen's birthday)
- Oral evidence to select committee on Broadband and neighbourhood planning
- First neighbourhood planning national convention
- Electoral commission support stance on e-mailing nomination papers
- BBC Radio 4 – create a council and community energy
- Articles in national press, letters to Times etc. and trade journals
- Extensive coverage of campaigns
- underground drilling;
- business rates
- Courts closure
- parish role in devolution
- Spending review/budget
- Regular meetings with LGA Chairman and articles in house magazine

Lobbying!



NALC's Manifesto – shaped by National Council and agreed by Policy Committee



Stronger local democracy	Fairer funding	More powers
Make it easier to set up new parishes across England	Pass on Council tax support funding	Reform and simplify outdated laws
Create an improvement and development strategy	5% share of business rates	Right to be consulted and right to engage
Encourage more people to become Councillors	Share of community infrastructure levy, New Homes Bonus and underground exploration funding	Facilitate use of General Power of Competence – “right to innovate”
In return we will deliver local powerhouse – deliver neighbourhood plans, community rights, join-up local service provision, build strong communities		

David Cameron pledges to save Britain's public loos

The number of council-run public lavatories has fallen from 12,000 to 6,000 in a decade, in part because business rates makes them costly to run



944



136



0



11



1K



Email



Male urinals in a public toilet Photo: Alamy

Source: The Telegraph

Fresh start, new Government

- Rt Hon Greg Clark MP, Secretary of State DCLG, Tunbridge Wells
- Brandon Lewis MP, Minister of State, Great Yarmouth.
- Marcus Jones MP, Parliamentary Under-Secretary of State (Local Government) Nuneaton
- Rt Hon Mark Francois MP, Minister of State (Housing) Rayleigh and Wickford, Essex
- James Wharton MP, Parliamentary Under-Secretary of State (Northern Powerhouse), Stockton
- Baroness Williams of Trafford (Parliamentary Under-Secretary of State DCLG)
- Rory Stewart MP, (Parliamentary Under-Secretary (DEFRA). Penrith and the Borders
- Rt Hon Oliver Letwin MP, Chancellor of the Duchy of Lancaster (Cabinet Office) West Dorset
- New MPs too! And shadow teams

Cities and Local Government Devolution Bill

- This will significantly change how England is governed with devolution of national services and more strategic cross service working around economic development, transport health etc. Including directly elected Mayors.
- This needs to be supported by “local powerhouses” linking the strategic with communities and delivering neighbourhood plans, joining up local devolved service delivery and promoting local housing and economic development
- If not there is the danger of a local democratic deficit, community disengagement and too much of a top down approach.

**“Devolution is relevant to
all of us and is happening
now – Don’t miss the
chance to reshape public
services”**

How can we grab this opportunity?

- Deliver NALC's strategic plan – next year's programme
- More effective lobbying, nationally, regionally and locally
- Deliver!
- Build our capacity, at all levels
- Build strong partnerships
- Promote the sector, shout from the rafters!

SESSION J

CLLR KEITH
STEVENS

NALC FINANCE

Affiliation Fees 2016-17 : presentation on behalf of the Finance Committee

Keith Stevens
Vice Chairman
Finance Committee

Sound Financial Management

- Series of unqualified accounts
- Positive outturns
- Scrutiny and remuneration panel
- Quarterly financial reports
- Robust asset base – 109
- We will deliver whatever the AGM decides

Strategic Plan – Financial Principles

- 3 year strategy backed by 3 year financial plan
- Build reserves
- Increase contribution from fees and reduce dependency on other income streams
- Strengthen core membership offer to councils – fewer “add-ons”

Sound finances deliver

- Winning confidence of government
- £4.7m transparency grant - £100,000 of applications already received for 200 smaller councils
- £540,000 to set up sector led body to procure audit services, saving councils costs of procurement and setting up independent audit panels
- £1m grant to CALCs and communities to set up new councils
- £30m 2013-18 to support neighbourhood planning
- £31m of council tax funding passed on 2014/15

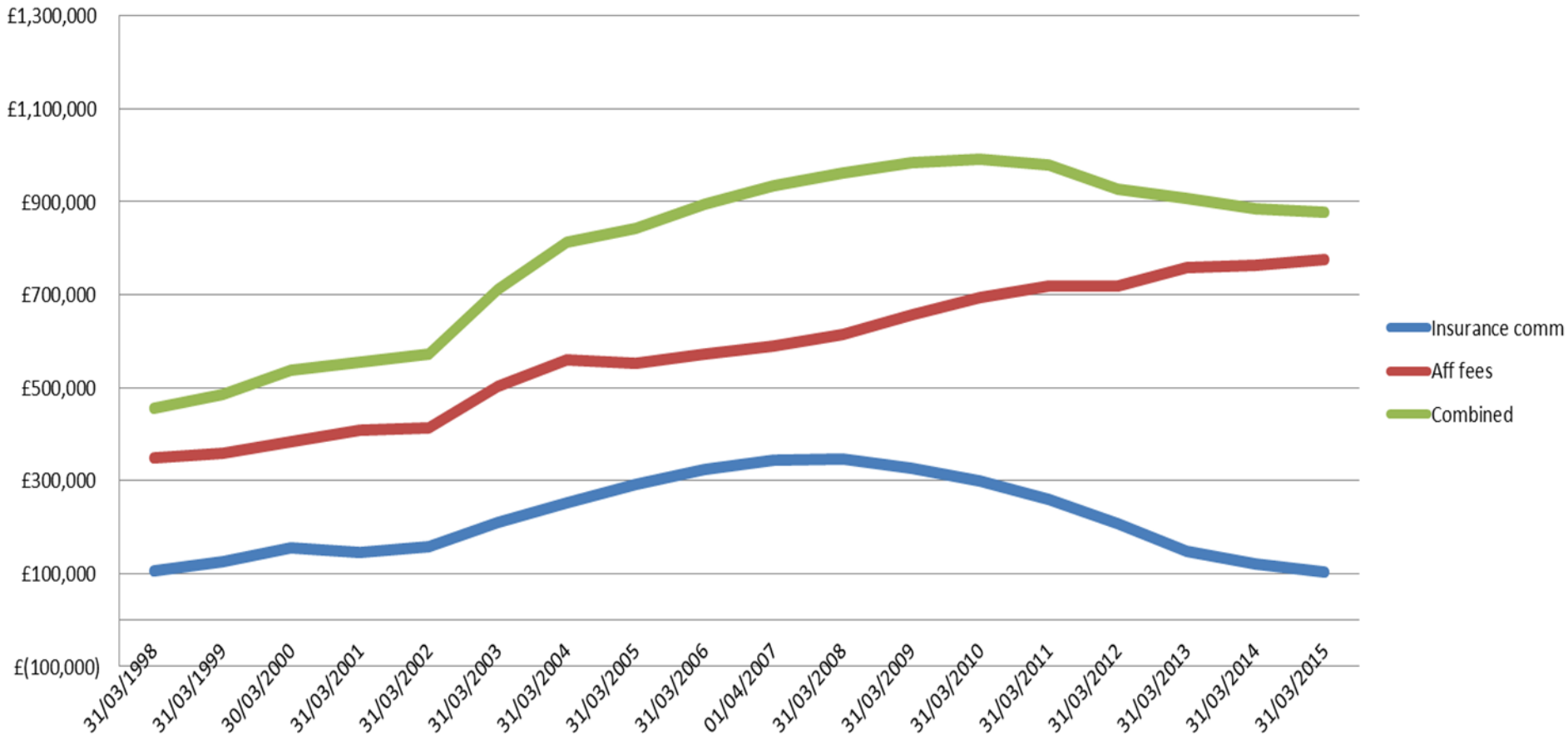
Sound finances deliver

- High quality services, still improving
- 100+ legal topic notes and financial briefings
- 620 legal and financial queries dealt with - £400,000+ in commercial rates
- 27 free events and conferences (in 2015)
- Free digital LCR, 100 bulletins updating on topical issues including accessing external grants
- Toolkits – procurement, communities and Neighbourhood Planning
- 325,000 page views of website resources

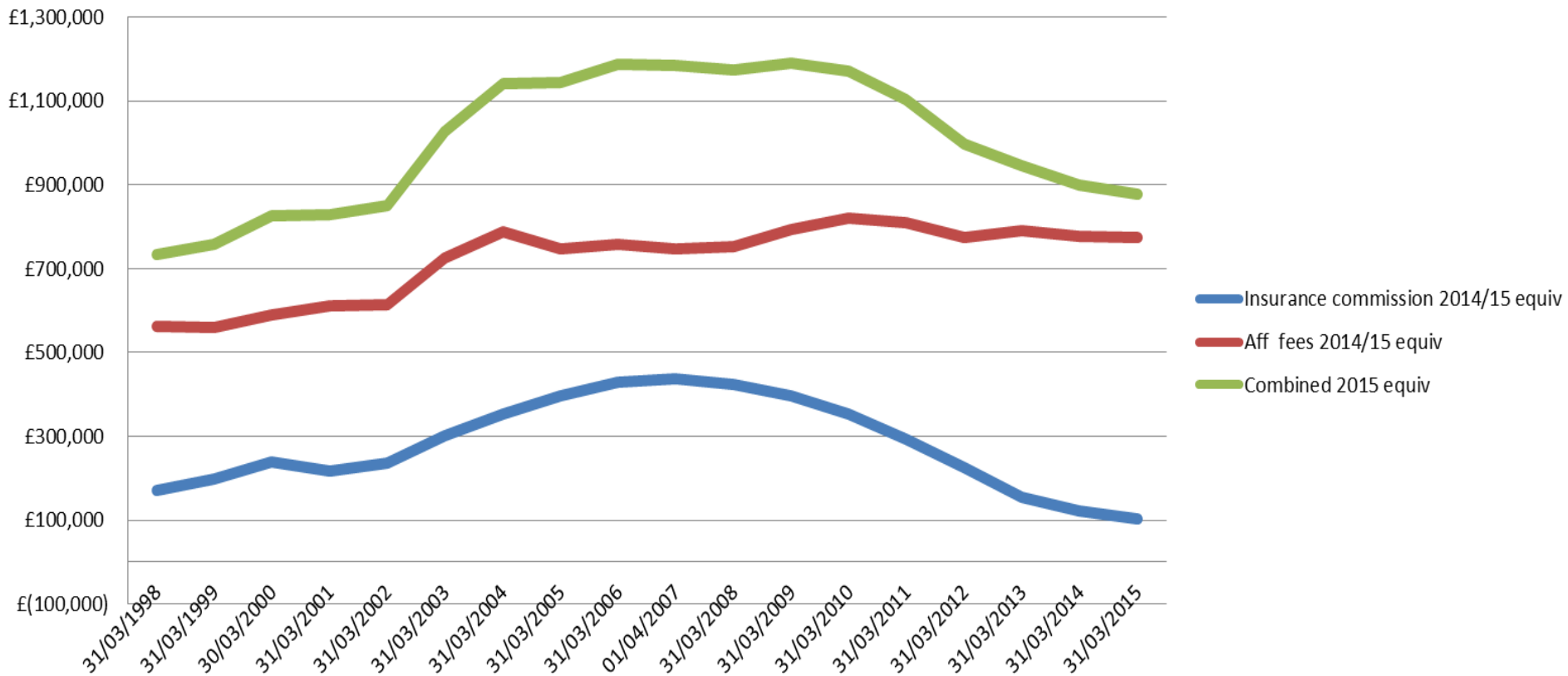
The financial challenge

- Reduced income from commissions £50,000
(and continuing uncertainty)
- Unavoidable Pension and NI costs £36,000
- Contribution to reserves £5,000

Affiliation fees and Insurance commission 1998 to 2015



Affiliation fees and Insurance commission at Dec 14 Equivalent value- based on RPI



AGM affiliation fee review

- Previous AGMs have asked for Finance and Executive Committee to look at the affiliation fee with a particular emphasis on a cap for larger councils

Affiliation fee proposals

- A maximum fee of £1,750 to attract more of the larger and new councils into membership
- A minimum fee of no more than £33 to reflect the services that all councils can access
- This could include “free” NALC membership for the very smallest
- A new flatter methodology
- £2.25 collection fee to contribute towards CALC costs

Feedback on proposals

- A big change, need more time to understand and model
- Minimum fee could have a big impact especially in counties where there are lots of smaller councils and a minimum fee already set
- Support for a maximum cap but question over level
- Questions about collection fee
- Significant increase in a difficult time

A way forward

- Further discussion and modelling especially of minimum fee and collection charge
- Implement the £1,750 max – something that AGM has been pressing for 2 years
- Consider proposal to increase affiliation fee to 6.6p per elector to consolidate progress and enable the sector to capitalise on opportunities ahead

Following feedback from a number of CALCs on the affiliation fee proposals we will be recommending to Council a revised motion as follows:

“That Council recommends to the AGM :

1. That consideration of the proposed introduction of a new methodology and minimum fee be deferred to enable further consultation and modelling to take place and a full report be made to next year’s AGM;
2. Introduce a maximum fee of £1750 in the light of the AGM’s discussion of this matter in previous years; and
3. An increase in the affiliation fee from 5.6 to 6.6p per elector for 2016/ 17

It is proposed that there will be a separate vote on each element of this proposal.”

SESSION J

CLLR SIR ALBERT
BORE, LEADER OF
BIRMINGHAM CITY
COUNCIL

SESSION J

BIG CONVERSATION ON AFFORDABLE HOUSING

JAKE BERRIMAN, RURAL
HOUSING ALLIANCE



#nalcevents

NALC AGM

Birmingham 2015

Affordable Rural Housing

Jake Berriman

- Member of RHAG
- Chair Rural Housing Alliance
- Member of Housing Sounding Board
- CEO Shropshire Housing Group



RURAL HOUSING ALLIANCE

Rural Housing Alliance

- An independent advisory body of rural housing providers who:-
 - Provide a single, clear and collective voice for housing association's lobbying and influencing on rural housing.
 - Enable specialist rural housing associations to compare and learn from each other's work in areas such as design sustainability, and community capacity building.
- A dynamic group of housing providers pledged to:-
 - Work closely with local communities and parish councils.
 - Always give qualifying local people the first priority on every house.
 - Ensure affordable housing always remains affordable.
 - Build quality homes and have sensitive local management

RURAL HOUSING ALLIANCE



Rural Services Network

- A voice for rural services – broadcasting best practice in rural service provision.
- Working in partnership with the Rural Housing Alliance to provide national advocacy for rural homes – promoting the development and good management of affordable rural homes.
- 2014 National Rural Housing Conference marked the beginning of this partnership.
- Acknowledging the severe housing shortage in the UK and special difficulties facing rural areas.



RURAL HOUSING ALLIANCE



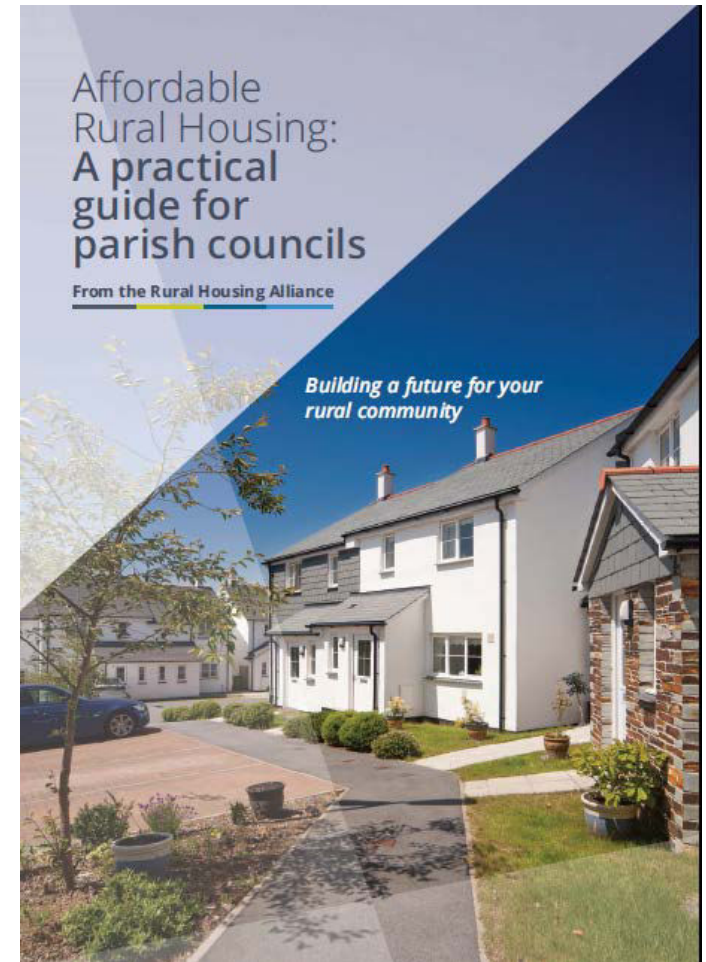
Building a future for your rural community

- 2014 – Lord Best Policy Review “A Fair Deal for Rural Communities”.
- Back by popular demand the Rural Housing Alliance refreshed and re published its practical guide in 2014.
- A resource to help communities to pursue their own rural housing projects.

“the absence of sufficient affordable homes in our rural communities is not a new problem, in fact it is a problem that has got worse in recent years”.

- HRH the Princess Royal

RURAL HOUSING ALLIANCE




shropshire
housing group

Well Rehearsed Rural Challenges



- Competition from commuters, retirees and second home owners means average rural house prices are 26% higher than in urban areas.
- Local earnings are consistently lower, £19,700 in rural districts compared with £26,900 in cities.
- There is less housing association and council housing <12% of stock in rural areas compared to 19% in urban areas.
- There is no national target for new rural affordable homes and this year the figure supported by HCA Grant fell to <8% of the AHP – yet 13% of the population lives in settlements of less than 3,000.

◆ Insufficient land ◆ insufficient incentive ◆ insufficient funding
◆ insufficient evidence ◆ insufficient support

RURAL HOUSING ALLIANCE


shropshire
housing group

New rural housing challenges

- General shift towards home ownership models and away from social/affordable rent.
- Extension of Right to Buy to housing associations.
- Sale of most valuable council homes (Rural?) to pay for RTB replacements.
- Proposed Rural Starter Home Initiative.
- Uncertainty over affordable homes on sites of less than 10.
- Impact on rural land price/expectations.
- Impact on housing association and council rent reductions.
- Impact of under occupation on family homes.



There is no simple solution, but...



- The most successful affordable rural housing developments are initiated and supported by active and committed town and parish councils.
 - You know the concerns on your patch.
 - You have an insight into local needs.
-
- You represent your area and often appreciate how affordable homes – giving people the chance to stay living in the place where they have strong ties – can sustain communities

- ◆ Local Plans ◆ Parish Plans ◆ Neighbourhood Plans
- ◆ Local housing needs surveys ◆ Parish design guides

RURAL HOUSING ALLIANCE



shropshire
housing group

Delivering successful Rural Affordable Housing requires:-

- **Joined up working between:-**



- The local community
- The local authority
- A housing partner
- A willing land owner

- **A shared vision**

RURAL HOUSING ALLIANCE


shropshire
housing group

In Shropshire our vision is Community led housing

Recent SHG Schemes:

- Lyonshall
- Orleton
- Onibury
- Neenton
- Church Stretton



Lyonshall



***“Community Led housing enabled Lyonshall to provide affordable housing on terms that the community wanted. At long last we were able to start a housing project targeted at the community which also had the support of the community”
– Paul Avery, Chair of Lyonshall Parish Council***

RURAL HOUSING ALLIANCE


shropshire
housing group

Neenton



“The way SSHA has engaged with our community to deliver affordable housing as an integral part of a major community project that has helped make it happen has been crucial in winning over the doubters”
– John Pickup, Chair, Neenton BenCom.

RURAL HOUSING ALLIANCE

shropshire
housing group

Church Stretton



“Coming together is a beginning, keeping together is progress, working together is success”. This quote from Henry Ford sums up what the Ashbrook II Project Board is all about. We came together in the beginning as a group of enthusiastic people from all walks of life who wanted to be involved in producing the best affordable housing project for the community of Church Stretton. We have gone out to seek people’s views, deliberated over architects, builders, site layout, design details and building materials. We have agreed, disagreed and compromised but in the end we have a planned development which encapsulated all our input. I now look forward to it being a success” – Hilary ClaytonSmith – Project Board Member and local architectural quality champion

RURAL HOUSING ALLIANCE


shropshire
housing group

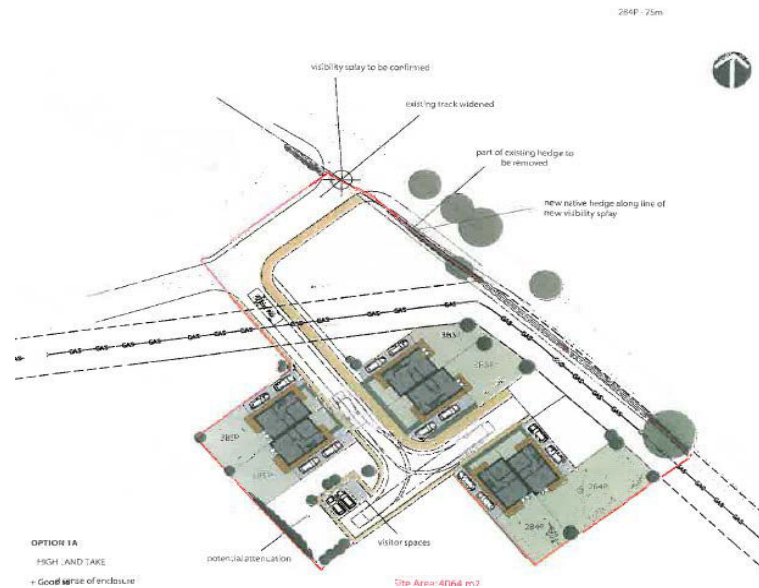


LEGEND

- Red: 100,000 sq ft retail center
- Blue: 100,000 sq ft retail center
- Green: 100,000 sq ft retail center
- Grey: 100,000 sq ft retail center
- Black: 100,000 sq ft retail center
- White: 100,000 sq ft retail center
- Yellow: 100,000 sq ft retail center
- Orange: 100,000 sq ft retail center
- Paved: 100,000 sq ft retail center
- Grass: 100,000 sq ft retail center
- Water: 100,000 sq ft retail center
- Other: 100,000 sq ft retail center

NOTES:
EXISTING MAJOR SPACES (Hwy 101) TO BE RELOCATED AND IMPROVED ON SITE ACCESS. LAYOUT AND DESIGN TO BE COMPLETED IN CONSULTATION WITH SHARON COUNTY DRAINAGE.

Scale:
1" = 100'



From the first instance, the local development, this is in the interest of an open agenda in public meetings and planning and design were discussed. Onibury Parish Council

The logo for Shropshire Housing Group features a stylized wave graphic in green and blue above the text "shropshire" in a bold, lowercase sans-serif font, with "housing group" in a smaller, lowercase sans-serif font below it.

Our learning shared

Why involve a **RURAL HOUSING ALLIANCE** partner?

- We believe joint working delivers:
 - A better scheme
 - Better community engagement
 - Better fit to local needs, acceptance and welcome
 - More sustainable communities
 - Greater validation of Parish Councils delivering locally
- Community led empowers people and communities
- It can be fun and rewarding, honest!

RURAL HOUSING ALLIANCE



The Rural Alliance Pledge

Affordable homes for
local people

We will:

- ✓ Work closely with the local community and Parish Council to find the right site
- ✓ Always give qualifying local people in housing need first priority for every home
- ✓ Ensure that affordable homes always remain affordable
- ✓ Build sensitively designed, high quality homes to high environmental standards
- ✓ Provide good quality and locally sensitive management services to our residents
- ✓ Always respond positively to the local community.



Thanks for listening Questions?

<http://www.rsnonline.org.uk/images/files/ruralhousing-guideforparishcouncils2014.pdf>



 business for neighbourhoods

RURAL HOUSING ALLIANCE


shropshire
housing group

THANK YOU

NALC ANNUAL CONFERENCE 2015



#nalcevents