

# PARTNERSHIP WORKING

# SESSION OUTPUTS

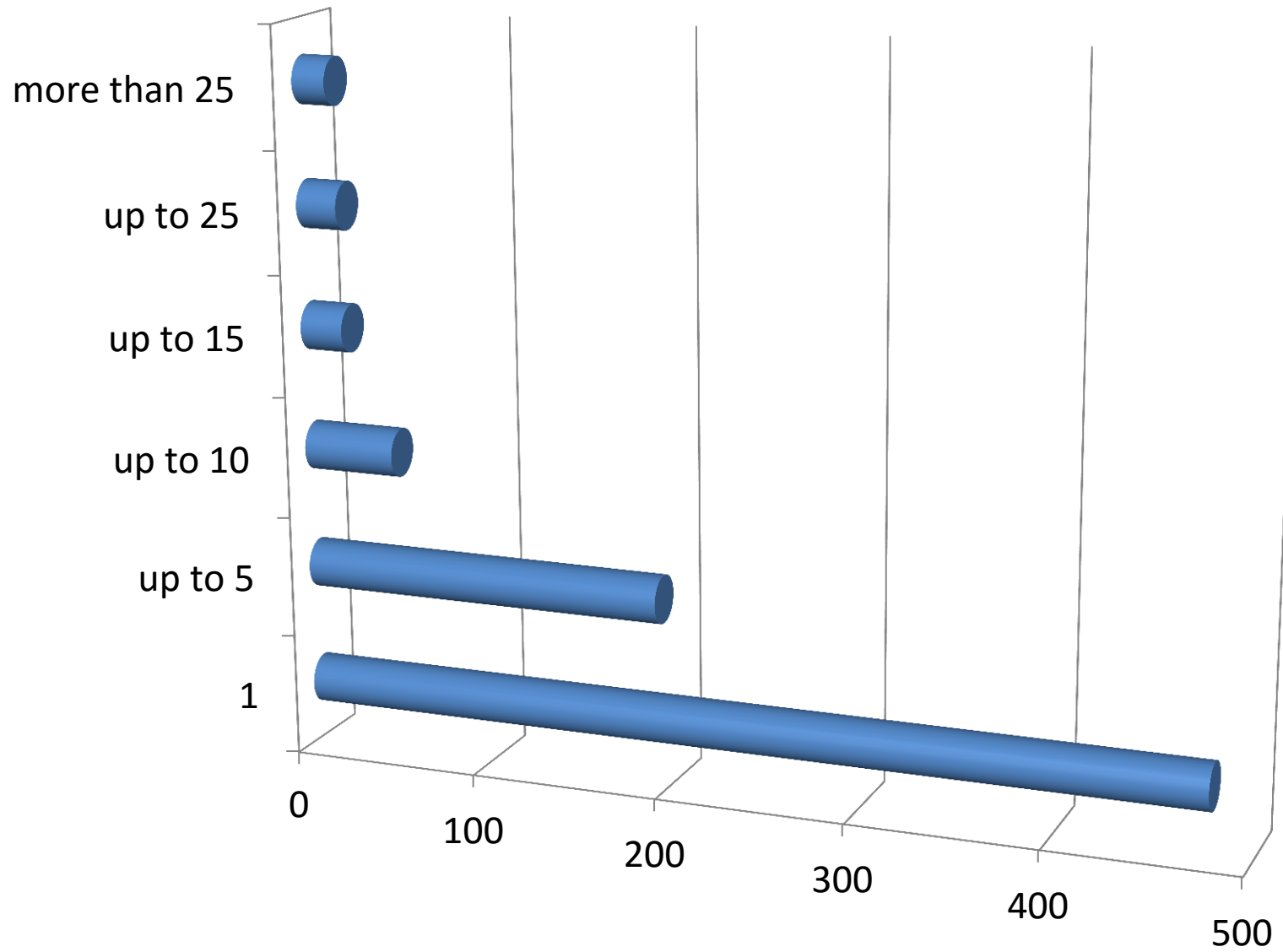
- Building Capacity and Capabilities Research
- NALC Devo Plus Toolkit
- Partnership Framework
- Types of Partnership Working
- Partnership Workshop
- Q&A

“Together we will explore the potential for devolution and greater partnership working at a local level. Communities can be at the forefront of leadership, representation and service delivery through joined up working.”

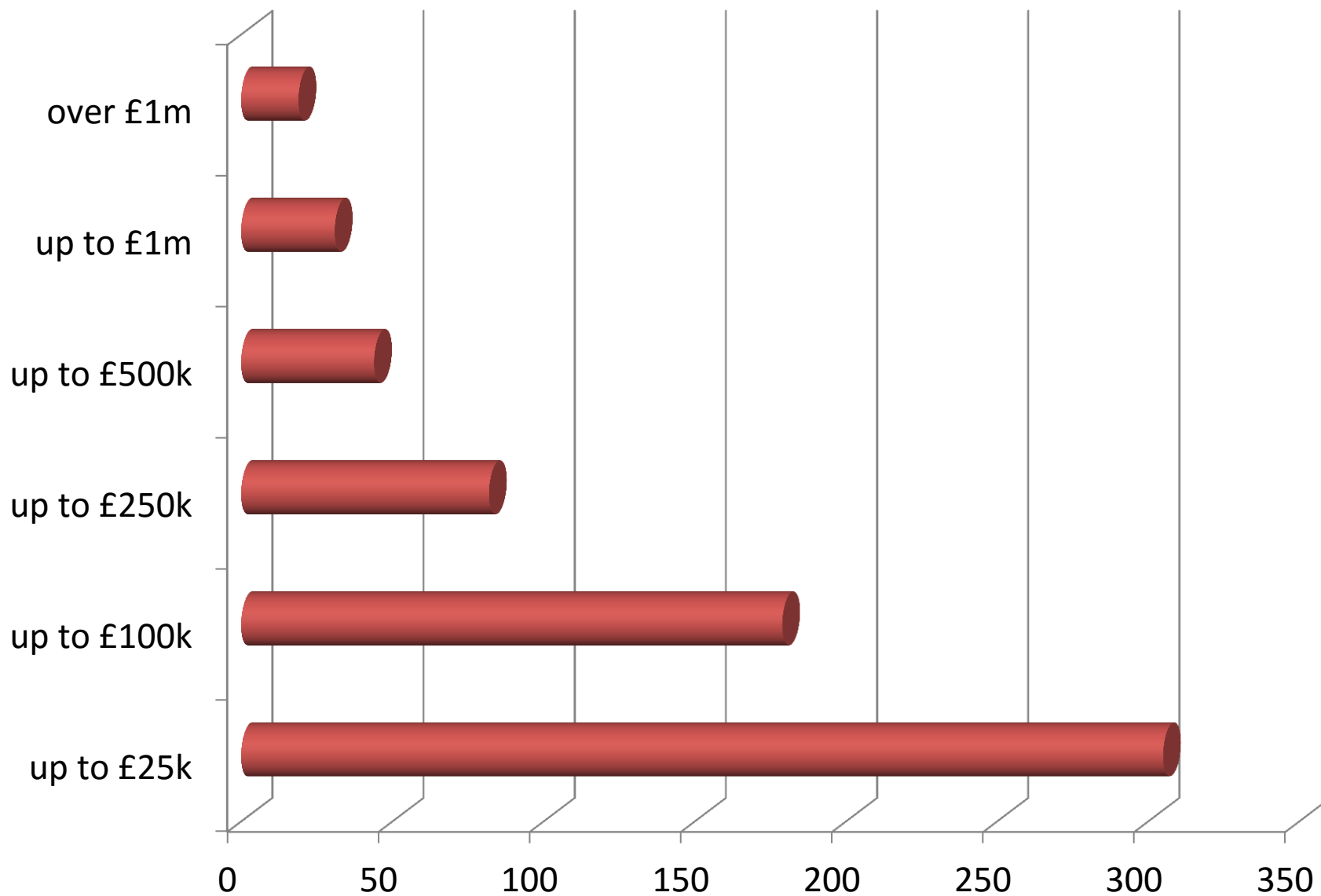
# FACTS AND FIGURES

- 61% of local councils employ 1 clerk
- 65% of local councils employ 1 clerk for up to 15 hours a week
- 54% of local councils serve a population of less than 2,000
- On average there were 2 councillor vacancies per local council over the past twelve months
- 90% of local councils support and fund training & development
- 13% of local councils have an accredited Local Council Award
- 99% of local councils publish information and engage with the public through a website and social media

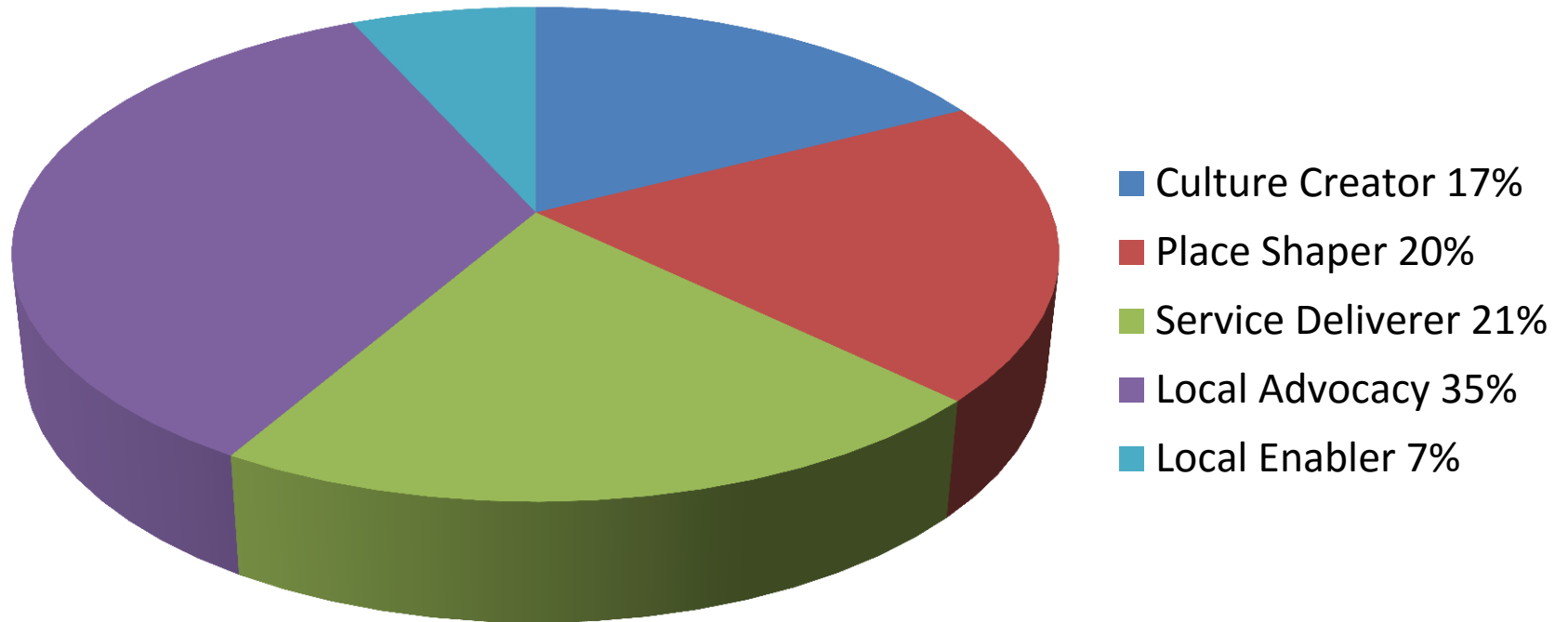
## Staff Resources



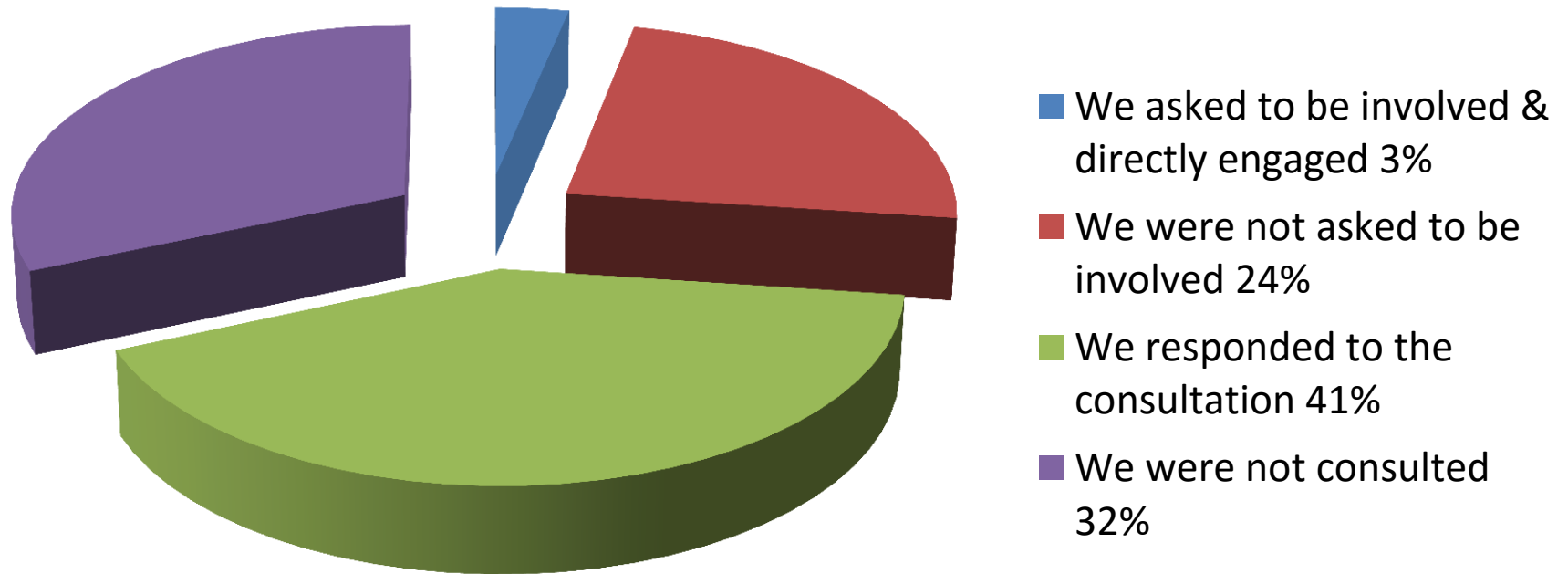
## 2017/18 Precept



## Diversity and Uniqueness



## Devo Engagement & Involvement



# Quotes

- “we have approached the principal councils but they will not engage on devolution”
- “there have been two processes - the county council involved local councils, the district council did not consult at all”
- “the county council does not consult and ignores outcomes it dislikes”
- “invited but parish council too small to take on requirements”



## National

UK Parliament

Wales/Scotland/  
Northern Ireland  
(elected parliament/assembly)

Principal Authority

## Principal

Central Government

Principal/Combined  
Authority  
in England

Town & Parish  
Councils

## Local

Principal Authority  
in England

Town & Parish  
Councils

Community  
Organisations

## Engage

Local Residents

Principal Councils

Private Sector

Voluntary Sector

## Consult

Local Residents

Principal Councils

Private Sector

Voluntary Sector

## Negotiate/Discuss

Local Residents

Principal Councils

Private Sector

Voluntary Sector

## Influence

'to influence the way services are delivered in your town or parish'

social

economic

environmental

## Participate

'to participate in the funding of services in your town or parish'

social

economic

environmental

## Deliver

'to deliver services on behalf of a principal authority'

social

economic

environmental

# Range of Services

- children and young people
- community transport
- economic development and tourism
- health and well-being (mental health & social care)
- highways maintenance
- housing
- older people
- planning
- village/town centre improvements

### Types of Devolution

National  
Principal  
Local

### How to Start

Engage  
Consult  
Negotiate

### Range of Services

Influence  
Participate  
Deliver

**Finance:** Precept, Investment, Participatory Budgeting, Grants & Assets

**Legal:** Power, Staffing, Agreements

**Case Studies:** Oxfordshire Together, Wye with Hinxhill, Wilsden

**Endorsements:** LGA, DCN, CCN, NCVO

### RECOMMENDATIONS

new local councils  
joint working  
Localism Act review  
new governance models  
council tax support funding  
referendum principle  
business rates system reform  
fairer funding CIL, NHB and exploration funding

## Devolution preview page

Town and parish (local) councils have a hugely important role to play in the onward and macro-devolution agendas. Click on the below tabs for more tailored information to discover how and why.

[\*Devo Local\*](#)[\*Devo Plus Toolkit\*](#)[Resources and publications](#)[Case study information](#)[Useful web links](#)[View all devolution related news stories](#)

Town and parish (local) councils have a hugely important role to play in the onward and macro-devolution agendas. Click on the below tabs for more tailored information to discover how and why.

## ***Devo Local***

## ***Devo Plus Toolkit***

The *Devo Plus* toolkit, published by NALC in December 2016, is endorsed by the Local Government Association, County Councils' Network, District Councils' Network and National Council for Voluntary Organisations and puts into context the sector's role within the wider devolution agenda.

The toolkit explores the how and why of devolution and alongside three case studies looks at ways in which all town and parish councils can play their part alongside important financial and legal considerations.

[Read Devo Plus Toolkit](#)

## **Resources and publications**

## **Case study information**

## **Useful web links**

[View all devolution related news stories](#)

***Devo Local***

***Devo Plus Toolkit***

**Resources and publications**

**Case study information**

Please click on the below links to view and download specific onward devolution toolkits, charters and materials generated from local areas across England since 2015 which will be of use and interest to parish and town councils.

[Cambridgeshire County Council – Strategy for Building Resilient Communities \(2015\)](#)

[Gloucestershire County Council – Onward Devolution \(2015\)](#)

[Cornwall Council – Localism Strategy \(2016\)](#)

[Dorset County Council – Working Together Highways Strategy \(2016\)](#)

[East Anglia – Devolution Consultation \(2016\)](#)

[Oxfordshire County Council - Giving Communities Control over Local Services \(2016\)](#)

[Swindon Borough Council – Parishes Programme \(2016\)](#)

[Peterborough City Council – Parish Charter \(2015 \)](#)

[Worcestershire County Council – Councils Working Together \(2015\)](#)

[Worcestershire County Council – Act Local \(2016\)](#)



Town and parish (local) councils have a hugely important role to play in the onward and macro-devolution agendas. Click on the below tabs for more tailored information to discover how and why.

***Devo Local***

***Devo Plus Toolkit***

**Resources and publications**

**Case study information**

**Useful web links**

Please click on the below links to view and download specific devolution materials specifically generated by other national public sector stakeholders which will be of use and interest to parish and town councils.

[LGA Devolution Hub](#)

[LGA New Conversations Engagement Guide](#)

[LGA Devolution Explained You Tube Video](#)

[LGA Devolution Map](#)

[NCVO Local needs, local voices: building devolution from the ground up](#)

[View all devolution related news stories](#)

# THANK YOU

w: [www.nalc.gov.uk](http://www.nalc.gov.uk) | e: [nalc@nalc.gov.uk](mailto:nalc@nalc.gov.uk) | t: 020 7637 1865