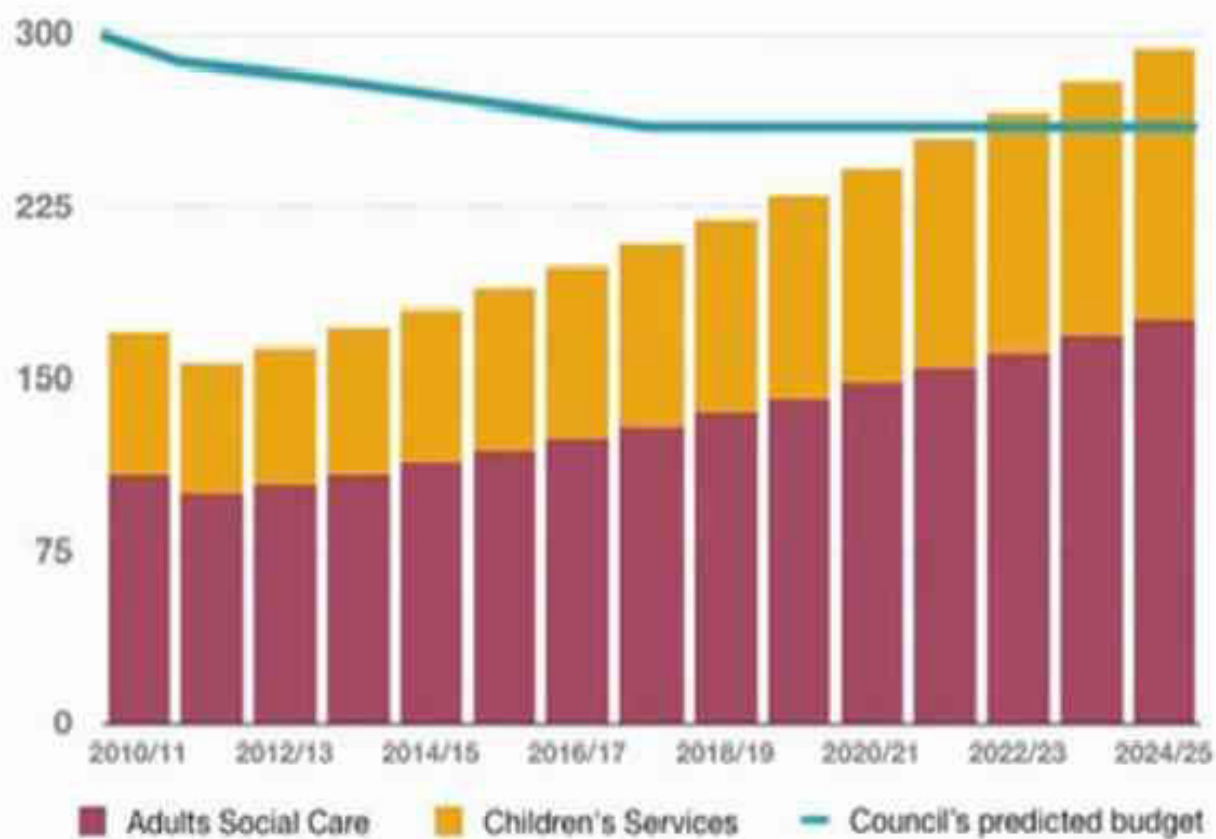





# Improvements no longer enough without innovation

Cllr Peter Fleming

## The 'Graph of Doom'





Like the crumpled  
paper, I will never  
be the same again.





# Improvement – key principles

directors of  
**adass**  
adult social services



**solace**



Improvement  
East

**ADCS**  
Leading Children's Services

**iese**

Accelerating public sector  
transformation



# Improvement – core components







THE LEADERS'  
PROGRAMME



TOP TEAM  
DEVELOPMENT



LEADING  
EDGE



LEADERSHIP  
ACADEMY



LEADERSHIP  
ESSENTIALS



NEXT  
GENERATION



FOCUS ON  
LEADERSHIP



COMMUNITY  
LEADERSHIP



BE A  
COUNCILLOR

## England Compared To All English Authorities, Quantiles Dashboard



Achievement of 5 or more A\*-C grades at GCSE or equivalent, including English and Maths

Overall employment rate (working-age)

Children looked after rate, per 10,000 children aged under 18

Period: 2012/13 (academic), Unit of measure: Percentage of the count of pupils at the end of KS4

Period: 2014 Q1 (rolling), Unit of measure: Percentage of the working age population

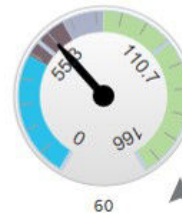
Period: 2012/13, Unit of measure: Per 10,000 children aged under 18



Under 18 conception rate



Obesity in primary school age children in Year 6



Working age people on out of work benefits

Period: 2012, Unit of measure: Per 1,000 girls aged 15-17 years

Period: 2012/13 (academic), Unit of measure: Percentage of children in year 6

Period: Q1 (Jan-Mar) 2014, Unit of measure: Percentage of the working age population



27.7



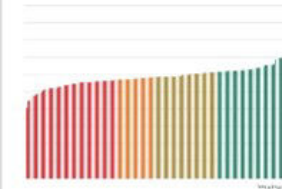
18.9



10.3

[▶ Headline report](#)

## Report builder



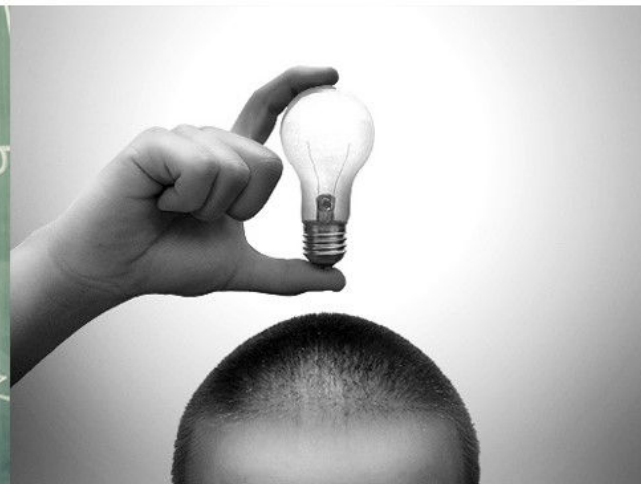
The report builder is the biggest development in LG Inform. It allows registered users to create maps, charts, text or tables using any metrics that are held in the LG Inform and combine these into a report in very much the same manner as you would create a Word report. You have greater flexibility than the Prototype and can manipulate the data and layout in numerous ways: moving content, resizing chart and adding corporate styles and logos.

We would encourage you to experiment with building your own reports to see the full functionality on offer. To get you started we have created a 'how to' guide for the report builder and an FAQ section.

[▶ Report builder](#)



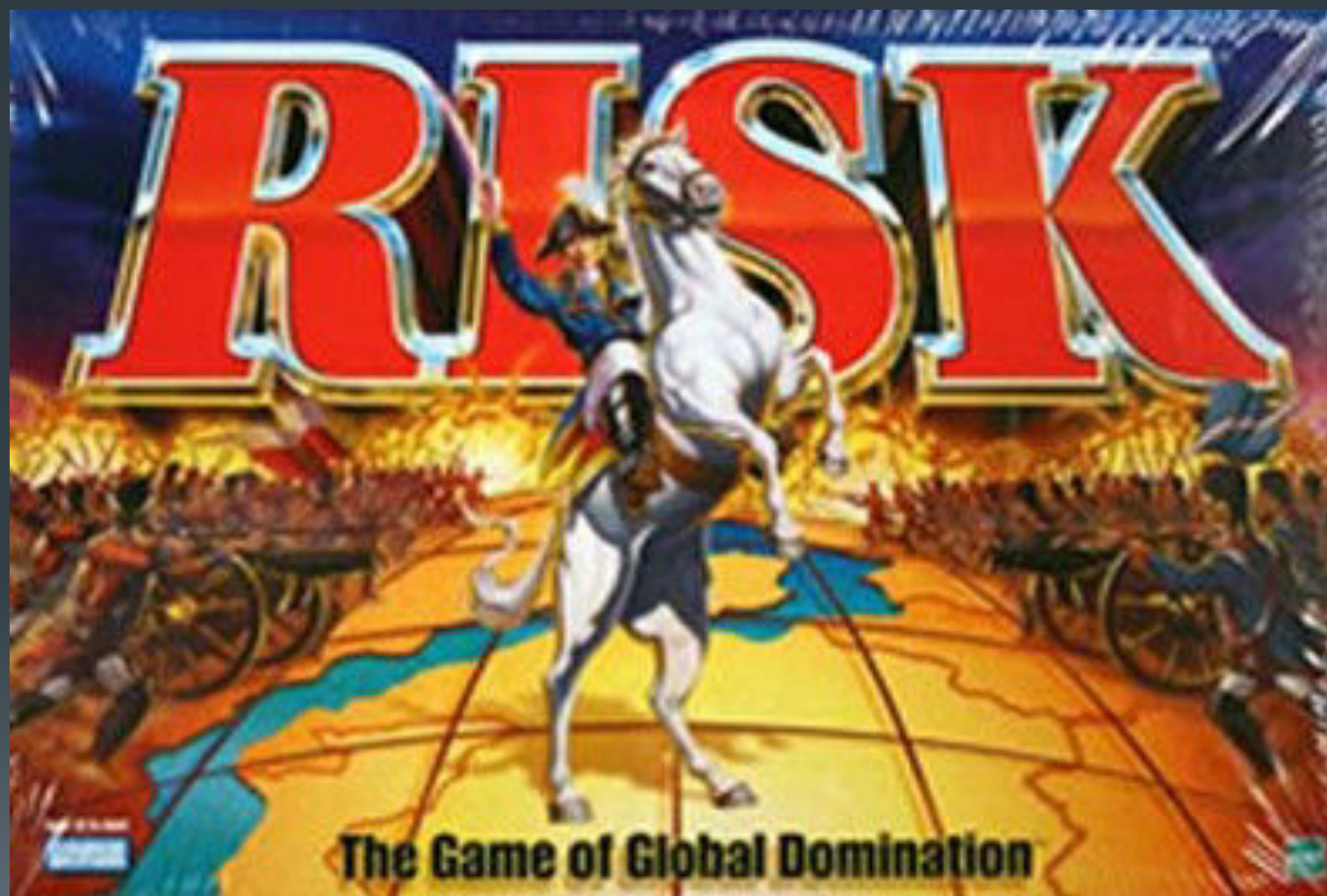






preventative improvement support















then splits according to the  
the thickness of a crea  
ellipsoids about the size and  
between **focus** the six lay  
ve information from the K  
om the cells The correspon  
ew (right and left) are sent



improvement support: some  
specific examples

  
**KEEP  
CALM  
AND  
DO MORE  
WITH LESS**



10 Awesome Tools to Boost Your Productivity



**MORE**  
— with —  
**LESS**  
— is —  
**MORE**





innovation







# TOMORROW'S WORLD



**BUMBLEBEE**



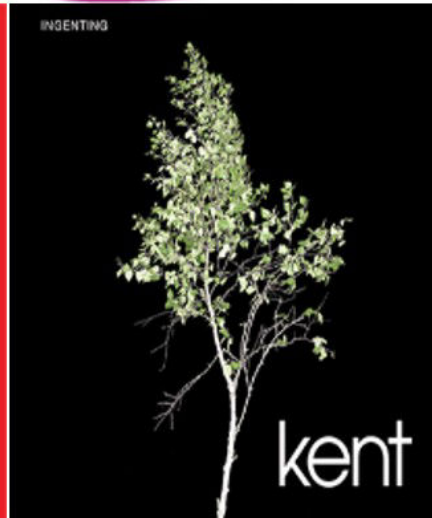


**NESTA** Making  
Innovation  
Flourish



**Local**  
**Government**  
Association





CAPITA



serco

# NEIGHBORS FROM HELL



it is up to us all















Twitter : @dmontfort

email : [cllr.fleming@sevenoaks.gov.uk](mailto:cllr.fleming@sevenoaks.gov.uk)